

# SAN JOAQUIN SIERRA

## Hoof Prints

June 2025

Issue 82

**San Joaquin Sierra Unit, BCHC**  
**PO Box 25693**  
**Fresno, CA 93729-5693**

**Email:** [membership@bchcalifornia.org](mailto:membership@bchcalifornia.org) (membership email only)  
**On the WEB:** [www.bchcsjsu.org](http://www.bchcsjsu.org) (SJS Unit) or  
[www.bchcalifornia.org](http://www.bchcalifornia.org) (State)

Max & Irene Cochran  
Newsletter  
Award Winner

3rd - 2022

### BACKCOUNTRY HORSEMEN



**Concerned Men and Women Dedicated to Gentle Use of California Trails and Backcountry**

## Presidents Message



Summer Is here, 3-digit temps are running, life is happening in all areas for me, and the work party calendar is filling up. Doug, Randy Witt, and I got our Crosscut Certifications and Brian Jones, Randy Witt, and Doug went up and got their Chainsaw certifications. We have the Edison work party

June 21 – 27 and if you have not expressed interest in this one please call and let us know so we can prepare enough food. We have been awarded a grant for work on the California Riding and Hiking trail and will be getting those work parties on the calendar soon. Please contact me or Marcee Hanson if interested in this work.

Saturday the 14th we have our annual Raffle Ride at Shaver Fish Camp. If you have raffle items, please get them to us or call for pickup. Something new or old everything helps. This is always a great event and thanks to all who have volunteered to help. On the 17th we have a general meeting at J Bar L Ranch featuring Kaycee Jones CEMT Certified Equine Massage & Therapy showing in the indoor arena.

Coffee, cold water, and desserts will be available.

Have you ever considered service on our board? Many positions are opening this year for our election meeting in October. Please give me or one of our directors in the directory a call for more info. Thank you to all who have and are doing so much to make our unit work for the entire membership. Thanks especially to those who no longer can participate but continue to support us through your membership. Hope to see you soon on the trail in the middle of the saddle on top.

Your President, Jim Laber

## In This Issue

Pg. 1	Presidents Message
Pg. 2	2025 Calendar
Pg. 3	Recipe of the Month
Pg. 4	Raffle Ride
Pg. 5	April Minutes
Pg. 7	General Meeting
Pg. 8-9	Clovis Rodeo Parade
Pg. 10	Montana de Oro Ride
Pg. 11	Sunshine Corner/Lighter Side
Pg. 12	2024 Officers & Directors
Pg. 13	Kids Corner
Pg. 14	BCHC Membership Application
Pg. 15	Big Meadows Horse Camp Sponsors

# 2025 Calendar

Board Meetings are now on the 3rd. Tuesday of the month. All members are welcome to attend. Board meetings start at 6:30 pm and for now we are meeting at the American Legion Hall, 508 4th Street, Clovis, CA 93612.

Calendar & Ride schedule is on-going, and new events and rides will be published when confirmed.

Note: Dates and events are subject to change or cancellation; calling the contact person is recommended or checking [www.bchcsjsu.org](http://www.bchcsjsu.org)

## 2025

June 7	Big Meadows Work Party TBD
June 14	Raffle Ride TBD
June 17	Board of Directors/General Meeting
June 21-27	Edison Work Party
Jul 15	Board of Directors
Jul 31 - Aug 4	MDO Camp and Ride
Aug 19	Board of Directors
Aug TBD	Fun Ride
Sept 6	Memorial Ride Big Meadows
Sept 16	Board of Directors
Oct 9-13	Coastal Mounted Assistance/SJSU MDO
Oct 21	Board of Directors
Oct 25	General/Election Meeting, Trail Trial Fun Day Luck of the Irish Ranch
Nov-Dec	Holiday Dinner TBD

Is there any activity that you would like to sponsor? We are always looking to improve the club and making it fun for all members. Please submit your ideas, [jim@visaliaidea.com](mailto:jim@visaliaidea.com). You may call 559.250.7906 and I will get back to you.

Jim Laber  
President

Remember to check for any Unit updates at our Web Site:

[www.bchcsjsu.org](http://www.bchcsjsu.org) for the San Joaquin/Sierra Unit,

[www.bhcalifornia.org](http://www.bhcalifornia.org) for the State Web Site

*The purpose of this publication is to keep its members in- formed on important issues that affect all horsemen and to inform the membership on up-coming events within the unit. The views and opinions expressed in this newsletter are those of the editor & authors and not necessarily shared by BCHC.*

## TATER TOT BREAKFAST PIZZA

*This Tater Tot Breakfast Pizza recipe with crispy potatoes, scrambled eggs, melted cheese, crispy bacon, and sausage is a crowd favorite!*

### INGREDIENTS:

- 30 oz tater tot crowns
- ½ tablespoon vegetable oil
- 6 eggs
- ¼ teaspoon salt
- ⅛ teaspoon pepper
- 2 cups shredded cheddar cheese, divided
- ¾ cup cooked, crumbled sausage
- ¾ cup cooked, crumbled bacon

### INSTRUCTIONS:

1. Preheat oven to 425°F.
2. Line the bottom of a 12-inch greased cast iron skillet with tater tot crowns and then line the sides of the pan. Bake for 15 minutes.
3. While baking, heat the oil in a pan over medium heat. Whisk together the eggs and a sprinkle of salt and pepper. Cook the eggs until just set (they will cook more in the oven).
4. Remove the tater tots from the oven and use a spatula to press down on top and sides of the pizza to smash the tater tots a bit.
5. Top with one cup of shredded cheddar cheese.
6. Add the scrambled eggs, sausage crumbles and another cup of shredded cheese, making sure the cheese reaches the tater tots on the sides of the pans.
7. Sprinkle with the crumbled bacon and bake for an additional 10 minutes.







JUNE 14, 2025

# BBQ RAFFLE RIDE

- OPEN TO EVERYONE
- INVITE YOUR FRIENDS
- \$25 members
- \$35 non-members
- \$10 youth

**Includes:**

- Coffee
- Doughnuts
- BBQ
- 5 Raffle Tickets

**Best Find Takes the Prize!**

(Additional Raffle tickets  
can be purchased)

- Donation items are Welcome
- Bring drinks for you
- Bring water for your Horse
- Bring a chair
- **Directions to Event:**  
Highway 168 to Shaver Lake, CA.  
Turn East on Dinkey Creek Road.  
Follow the signs to Fishing Camp  
4.3 miles on the left. Follow dirt  
road on the left to the parking  
area at the Trail Head.

Gate opens at 8:00 am,  
saddle up at 9:00 am,  
on the trail by 10:30 am

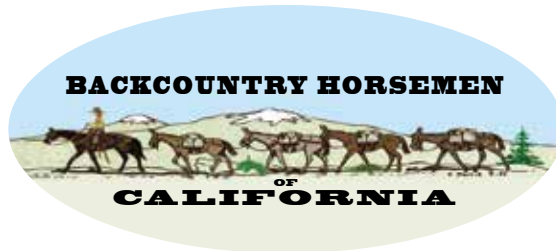
R.S.V.P. by June 6th  
to reserve your spot

Marcee Hansen: 559-977-9472  
or Ruth Cramer: 559-417-3878

Please be advised: no Stallions,  
no Dogs, & no Alcohol on trail.







### *San Joaquin Sierra Unit*

Board Meeting April 15, 2025

Call to order: 6:30

Flag salute

Roll Taken: President: Jim Laber, Vice President: Ruth Cramer, Secretary: Carol Kaminski, Treasurer: Linda Fitzgerald

Directors: Doug Laber, Steve Naylon, Marcee Hansen, Jan Mikkelsen

Absent: Loni Langdon, Karen Daughtrity, Lois Patten, Jeannine Jones

**Minutes review and approved:** not available

**Correspondence:**

**Committee reports:**

**Education:**

**Membership:** 3 new members at Steve's ranch ride.

**Newsletter:** Articles due Apr. 20 Article to be written on Ranch Ride.

**Sunshine:**

**Public lands:**

**Shaver Lake:** Ruth applied for permit. Opening early May. Raffle Ride – Jim and Doug to cook. Muriel, Tammy and Carol to support. Carol to do shopping. Linda and Ruth to create raffle guideline. Raffle tickets needed.

**Big Meadows:** Closed. Opening hopefully May. 3 dead trees need removal. DG needed for pens. Jim reviewed host handbook. Jim K. Double check membership of each host.

**OLD BUSINESS.** 1. EVENTS for 2025

April 15 Board of Directors • April 26 Clovis Parade

May 2-4 San Joaquin River Gorge Work Party • May 20 Board of Directors • May 20-25 Bishop Mule Days

TBD Big Meadows Work Party

June 14 Raffle Ride – Raffle items needed • June 17 Board of Directors – Pack team and therapist possibly

June 21-28 Edison Work Party – grant money needed

July 15 Board of Directors • July 31- Aug. 4 MDO Group - \$60 for weekend. RSVP to Linda Franklin

Aug. TBD Badger Flats/ Sample Meadow/Twin Lakes Work Party Stadham Meadow possible alternative

Aug. 19 Board of Directors

Sept. 6 Memorial Ride Big Meadows • Sept. 17 Board of Directors • Sept. 19-22 Badger Flats Work Party – pack station

Oct. 9-13 Coastal Mounted Assistance/ SJSU MDO • Oct. 25 General Election Meeting- Steve Naylon's ride

Nov. TBD Holiday Dinner Nov. 18 Board of Directors

Dec. 16 Board of Directors

June 17 – General Meeting – Looking into J-L. Linda to pursue. Possible Punchy Palimino therapist and possible report from Reedley Pack Team after Bishop. Bring your own chairs. Motion made by Jim for \$100 to Jan for refreshments. Ruth 1st, Doug 2nd. Rendezvous recap – Great pack clinics. Marcee received Top Hand award. Well done Rendezvous host.

May 2-4 SJ River Gorge Work Party – Shirts provided for workers. Weekend hosted by Cara Peterson.

Shed contents – Dump bags, large metal pack boxes, 6 ft. Crosscut, generator. Motion made by Ruth to sell generator.

Doug 2nd. Sale to purchase griddle.

**NEW BUSINESS:** 1. Work Party cook detail – discussed. Carol and Steve to cook.

2. Education Clinics –

3. Bulk mailing for membership – Jim to bring formal proposal. Don't need to ride to work. Hiking is ok.

4. Unit Chair Positions and Responsibilities – Seriously looking for new officers. If interested PLEASE contact and board member.

5. Raffle Ride Recap – Donations needed. Volunteers and riders needed.

**Adjourn:** 8:10 1st Jan , 2nd Marcee

Make sure you check out our website for updates on the Home page, Calendar page, and Newsletters. We also have a Photos page of our latest activities.

If you have any photos send them to Jim at [jim@visaliaidea.com](mailto:jim@visaliaidea.com) or upload them through the website: [www.visaliaidea.com](http://www.visaliaidea.com)

## **Advertising Rates**

### **Classified Ads**

\$.10/word with a 20 word minimum (\$2.00),  
\$.50 a line after that.

### **Display Ad Rate per issue**

Business Card Size, \$8.00,	1/2 page, \$35.00,
1/4 page, \$20.00,	Full Page, \$50.00

Prices are subject to change without notice. All prices are for one month, due the 10th of the month. Editor reserves the right to refuse inappropriate ads.

***All paid Ads include an E-mail Blast to all members with current emails***

## **Attention**

Your SJS Unit Board of Directors would like to invite any of our members to attend the monthly Board meetings or General meetings. It is important all directors have the same opportunity to hear the information, concerns or suggestions you wish to share. We are volunteers doing our best to keep our Unit informed and working smoothly. Refer to the newsletter, or website ([bchcsjsu.org](http://bchcsjsu.org)) for the information regarding times and location of upcoming meetings.

Respectfully,  
Jim Laber

**1/4 Page Ad**

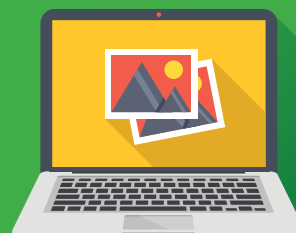
**\$20 per Month**

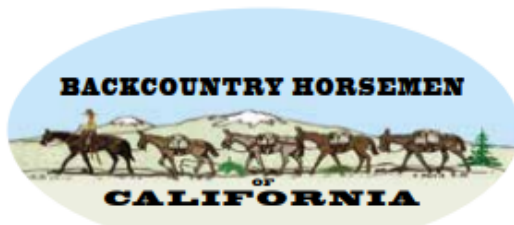
**AVAILABLE  
ADVERTISING  
SPACE**

## **HOWDY**

If you have attended any BCHC San Joaquine Sierra Unit events and have pictures, it would be deeply appreciated if you would send them to [wpeverill@sebastiancorp.net](mailto:wpeverill@sebastiancorp.net). As the webmaster, I like to keep the webpage up to date with photos of our events. Since I am not at the event, this is the only way to keep page current. You may also text via my phone number located on the webpage under webwrangler. Thanks in advance. Visit the webpage at [bchcsjsu.org](http://bchcsjsu.org) Happy Trails.

William Duane Peverill  
*Web Wrangler and Past President*





*San Joaquin Sierra Unit*

**Bring  
A  
Friend!**

## **GENERAL MEETING**

**Public Welcome**

**J BAR L ARENA  
10890 N Armstrong Ave.  
Clovis, Ca 93619**

**June 17, 2025  
6:30 pm  
Bring a Chair**

### **Guest Speaker**



**\* Kaycee Jones CEMT \***

**Certified Equine Massage & Therapy**

Kaycee will talk to us about the importance of keeping our equines in top shape for the trails. She will also demonstrate her technique on Cash, Karen Daugherty's valuable trail horse.

**Coffee & Deserts will be available!**

# CLOVIS RODEO PARADE

Clovis Rodeo Parade, another successful year! With our number 208, we were lucky enough to be in the 2nd division so the wait wasn't exhaustingly long and we were able to move out fairly quickly. Earlier in the year there were many enthusiastic members who were planning to ride in this year's parade. As the weeks went by, about 6 had to drop out for a variety of reasons. Fortunately these dedicated few stepped up in the stirrup and came through! Our ever so faithful Bob Herrick brought his adorable "pack" donkey's who decided they would be willing to display their cuteness and delight the crowds. Randall Paulson, our new member was more than happy to carry the flag introducing the unit and did a wonderful job!

It was disappointing that even though I submitted a description of what BCHC's mission is and what our unit provides for the community, we were just introduced as BackCountry Horseman, a group that works to keep the trails open.\*\* (See Below) This is the first year our details have been severely condensed, but hopefully those in the crowd, concentrating on keeping warm, didn't notice.

Because of the temperature, around 50 degrees that morning, a couple of us were unable to adhere to our uniform look of burgundy shirts. Bundling up and also preparing for possible rain was the priority.

Miraculously, just after we returned to the trailers, it began to rain.

Thank you to Linda Fitzgerald, Cindy Suarez, Randall, and Bob Herrick for going beyond fair weather riding and representing San Joaquin Sierra Unit. Last but not least, kudos to John Mikkelsen whose help we couldn't do without! You all were awesome.

Jan Mikkelsen

\*\*For those of you who would like to know the rest of the announcement for our unit at the parade.....

"The San Joaquin Sierra Backcountry Horsemen are a local trail riding group with over 120 members from Fresno County. They are part of the national group who work to ensure 'public lands stay in public hands' and trails remain open for equestrians and recreational use. They donate thousands of hours every year doing trail maintenance in the high country and teach wilderness preservation with 'leave no trace' practices."









## San Joaquin Sierra Unit



Come and enjoy Horse Camping at the Manznita & Chamise Camps

## Montana De Oro State Park

*The park's name, "Mountain of Gold," comes from the golden wildflowers that bloom in spring. The Park features over 8,000 acres of rugged cliffs, secluded sandy beaches, coastal plains, streams, canyons, and hills, including 1,347-foot Valencia Peak. No dogs are allowed on trails.*

**Camp is available from 2:00 pm Thursday 07/31/2025 until noon Monday 08/04/2025.**

There are miles of horse trails along the beach and in the foothills for all levels of riding.

**Potluck:** Join us for a potluck dinner Saturday night. Bring an item to be shared and your own meat item for our grill.

**Cost:** Horse and rider for 4 days is \$ 50.00; Additional individuals \$ 3.00

Manznita & Chamise Camps have 4 large stalls and 5 small stalls, pit toilets, water for horses only, no showers, and no hook-ups.

Contact Information: Linda Fitzgerald (559) 289-8322

This is a BCHC-SJSU sponsored event and you must be a member of BCHC to attend.

Reservations are limited and will only be taken upon receipt of signed check with reservation form below.

NAME:		PHONE:	
ADDRESS:			
Please make check payable to <b>BCHC-SJSU</b> and mail with completed reservation form to:  Linda Fitzgerald 327 Moody Ave. Clovis, CA 93919	EMAIL:		Amount
	Number of Horses with rider		@ \$ 50.00 ea. \$
	Additional individuals		@ \$ 3.00 ea. \$
	<b>TOTAL:</b> \$		



# SUNSHINE CORNER

Stay Safe Everyone  
and Happy Trails

Happy Fathers Day  
to all the dads!



## The Lighter Side

A cowboy buys a horse from the town pastor. The pastor explains, "to make the horse go, you gotta yell, 'Thank God!' And to make it stop, yell, 'Hallelujah.'" The cowboy rides off. He rides all day and starts to nod off in the saddle when he notices he is about to ride straight over a cliff. Searching his memory, he yells to the horse, "Hallelujah! Hallelujah!" The horse grinds to a stop just at the edge of the cliff. The cowboy wipes the sweat off his forehead. "Phew!" the cowboy sighs. "Thank God!"

## WELCOME TO OUR NEW MEMBERS!

Kaitlen Betchel, Lemoore

Jason & Anne Nikolakakis, Templeton

Morgan Wukodinsvich, Kingburg

Bonnie Pearce, Clovis

Andrea Jacobsen, Clovis

Patsy Anderson, Strathmore

Randall Paulson, Sanger

Debra Zavatto, Clovis



PRINTING & GRAPHICS INC.

**(559) 733-4149**

Fax: (559) 636-3690

[orders@visaliaidea.com](mailto:orders@visaliaidea.com) • [www.visaliaidea.com](http://www.visaliaidea.com)

1921 E. Main Street • Visalia, CA 93292

Mon.-Fri. 9am-5pm

*Contributing to your success,  
one impression at a time!*

*We Love To Make You Look Good!*



## **2024 OFFICERS/DIRECTORS**

### **President**

Jim Laber, 559-250-7906  
jim@visaliaidea.com

### **Vice President**

Ruth Cramer, 559 417 3878  
racramer@outlook.com

### **Secretary**

Carol Kaminski, 559-733-9170  
kaminskiclan@gmail.com

### **Treasurer**

Linda Ritzgerald, 559-289-8322  
linda.fitzgeraldcbs@gmail.com

### **DIRECTORS**

Term Expires at end of year:

Steve Naylor, 559-284-7478  
scnaylor@hotmail.com  
2025

Loni Langdon, 760-920-5159  
lclangdon@gmail.com  
2025

Karen Daughrity, 559-903-5552  
k\_daughrity@yahoo.com  
2025

Doug Laber, 559-786-6634  
douglaber@gmail.com  
2025

Marcee Hansen, 559-977-9472  
jamn4jabez@yahoo.com  
2026

Jan Mikkelsen,  
jessecowboy@comcast.net  
2026

Jeanine Jones 559-862-5178  
jjones2248@gmail.com  
2026

Lois Patten 559-970-2548  
pattenkennel@gmail.com  
2026

## **COORDINATORS**

### **Membership/Mailing Coordinator**

Jan Mikkelsen,  
jessecowboy@comcast.net

### **Public Lands Liaison**

Marcee Hansen, 559-977-9472  
jamn4jabez@yahoo.com

### **Newsletter Editor**

Jim Laber, 559-250-7906  
jim@visaliaidea.com

### **Education Coordinator**

### **Ride Coordinator**

Lois Patten 559-970-2548  
pattenkennel@gmail.com

### **Sunshine**

Karen Daughrity, 559-903-5552  
k\_daughrity@yahoo.com

### **Shaver Lake Camp Host**

Ruth Cramer, 559-417-3878  
racramer@outlook.com

### **Web Wrangler**

Duane Peverill, 559-908-3138  
wpeverill@sebastiancorp.net

### **Facebook**

Marcee Hansen, 559-977-9472  
jamn4jabez@yahoo.com

### **Big Meadows Horse Camp**

Jim Knabke, 559-299-3254  
jjknabke@comcast.net

## **ADVISORS**

### **Past President**

Joe Kaminski, Honorary



# KIDS CORNER

## Horse Care

### Word Search

**DIRECTIONS:**  
Find and circle the  
vocabulary words  
in the grid. Look  
for them in all  
directions including  
backwards and  
diagonally.

BIT  
BLANKET  
BODY BRUSH  
BOOTS  
BRIDLE  
BUCKET  
CINCH  
CURRY COMB  
FIELD  
FLY REPELLENT  
GLOVES  
HALTER  
HARNESS  
HAY  
HELMET  
HOOF PICK  
LEAD ROPE  
MANE COMB  
MANURE FORK  
PASTURE

V	M	H	K	D	T	C	Z	J	M	Z	M	D	T	R	O	U	G	H	C	F
P	L	I	T	L	X	K	I	Q	N	L	W	T	T	H	U	N	T	O	G	K
M	M	M	A	E	T	Y	D	Y	Z	H	I	H	V	I	V	L	R	O	V	O
T	K	L	M	I	O	Z	A	F	D	B	F	Y	X	X	Q	M	A	F	P	H
Z	Y	T	V	F	O	M	R	H	S	U	R	B	Y	D	O	B	I	P	F	R
C	E	L	W	W	O	R	R	A	B	L	E	E	H	W	V	Y	L	I	B	H
O	E	P	F	E	H	L	X	K	S	P	U	R	R	I	T	S	E	C	L	A
E	Q	U	O	W	I	Q	A	H	C	P	B	U	C	K	E	T	R	K	A	R
E	X	B	W	R	M	A	N	U	R	E	F	O	R	K	G	W	U	F	N	N
R	X	O	T	L	D	E	B	S	Z	E	H	D	R	K	S	C	C	T	K	E
U	A	A	U	R	S	A	D	D	L	E	Y	O	R	V	P	K	I	Y	E	S
T	E	M	L	E	H	C	E	B	N	H	P	O	D	C	B	D	U	N	T	S
S	C	B	Y	T	J	F	A	L	Y	C	F	A	L	U	V	R	G	T	C	C
A	O	T	B	L	R	T	Z	L	R	H	M	L	L	R	X	G	I	B	N	H
P	T	C	Q	A	S	B	C	Q	C	R	S	G	E	R	B	C	E	D	V	H
Q	Q	V	L	H	A	D	J	T	L	A	L	E	R	Y	R	B	X	H	L	Y
G	P	K	D	I	Z	D	I	Z	N	W	S	S	V	C	M	C	O	U	O	E
L	F	L	Y	R	E	P	E	L	L	E	N	T	C	O	C	B	P	O	S	X
G	M	A	N	E	C	O	M	B	S	T	A	L	L	M	L	K	W	H	T	B
H	I	S	J	O	G	K	L	F	H	N	V	A	Y	B	A	G	S	X	K	S
I	J	G	U	I	T	V	H	D	H	S	K	Q	Q	U	M	U	H	S	Z	W

PITCHFORK  
SADDLE  
STABLE  
STALL  
STIRRUPS  
TRAILER  
TROUGH  
WHEELBARROW

#### DID YOU KNOW?

Horses require regular  
dental check-ups to  
ensure their teeth are  
healthy and able to  
properly chew food.

## Backcountry Horsemen of California



**MAIL TO:** BCHC  
MEMBERSHIP  
1280 State Rt. 208  
Yerington, NV 89447

### MEMBERSHIP APPLICATION

A Family & Youth  
Oriented Organization

Release 4 2025 (11 Feb 25)

☐ New ☐ Change

☐ Renewal

### PARENT UNIT AFFILIATION: (Select and CHECK a Unit as your Affiliation)

- |  |   |  |   |
|--|---|--|---|
| <input type="checkbox"/> Antelope Valley   | <input type="checkbox"/> Los Padres       | <input type="checkbox"/> Redshank Riders               | <input type="checkbox"/> Sierra Freepackers |
| <input type="checkbox"/> Eastern Sierra    | <input type="checkbox"/> Manzanita Riders | <input type="checkbox"/> Redwood                       | <input type="checkbox"/> Sutter Buttes      |
| <input type="checkbox"/> High Country      | <input type="checkbox"/> Mid Valley       | <input checked="" type="checkbox"/> San Joaquín Sierra | <input type="checkbox"/> Top of the State   |
| <input type="checkbox"/> High Sierra       | <input type="checkbox"/> Mother Lode      | <input type="checkbox"/> Santa Ana River               |   |
| <input type="checkbox"/> Kern River Valley | <input type="checkbox"/> North Bay        | <input type="checkbox"/> Sequoia                       |   |
| <input type="checkbox"/> Kern Sierra       |   | <input type="checkbox"/> Shasta Trinity                |   |

DCTR (Your Membership Number): \_\_\_\_\_

MEMBER'S NAME - No Business Names, Print Clearly

SPOUSE/CO-MEMBER'S NAME - MUST SHARE SAME ADDRESS

Street Address/PO Box

City \_\_\_\_\_ State \_\_\_\_\_ Zip Code (full 9 digits if known) \_\_\_\_\_ Area Code \_\_\_\_\_ Phone Number \_\_\_\_\_

Email Address: \_\_\_\_\_

Email Address: \_\_\_\_\_

Donation to BCHC Education Fund (Tax deductible ) \$ \_\_\_\_\_ Enclosed: \$ \_\_\_\_\_ Check No. \_\_\_\_\_

### Parent Unit Membership Types (Check One)

- |  |  |   |  |
|--|--|---|--|
| <input type="checkbox"/> 1 Year Individual \$60  | <input type="checkbox"/> 1 Year Family \$75  | <input type="checkbox"/> Young Adult (18-25 years old) \$15 | <input type="checkbox"/> Benefactor \$100  |
| <input type="checkbox"/> 2 Year Individual \$110 | <input type="checkbox"/> 2 Year Family \$140 | Include Date of Birth / /                                   | <input type="checkbox"/> Patron \$250      |
| <input type="checkbox"/> 3 Year Individual \$160 | <input type="checkbox"/> 3 Year Family \$205 |   | <input type="checkbox"/> Mt. Whitney \$500 |

**Associate Membership: An Additional \$15 PER UNIT is added to your Parent Unit Dues**

Associate Membership Unit Affiliations MAY NOT BE FOR THE SAME UNIT AS YOUR PARENT UNIT

Associate Membership for: \_\_\_\_\_ \$15/Unit  
Unit Name (from above list)

Associate Membership for: \_\_\_\_\_ \$15/Unit  
Unit Name (from above list)

Associate Membership for: \_\_\_\_\_ \$15/Unit  
Unit Name (from above list)

**Please clip form along dashed line and keep the below portion for your records.**

### Parent BCHC Membership Types

Individual, Family, (Shared\*\*), Benefactor, Patron, and Mt. Whitney  
A Parent Membership is with a single Local Unit.

\*\*A SHARED Membership is for two adults with differing last names who share a common address.

### Associate Memberships

These special Memberships are only available to persons already holding Parent BCHC Membership. No one may sign up for an Associate Membership without 1) having registered one of the Parent Membership types, and 2) having selected Parent Unit affiliation.

**Youth Memberships** MUST include date of birth on application. The year you turn 24 is the last year you may renew under this membership.

**Complete information regarding BCHC Membership is available on the MEMBERSHIP TAB at [bchcalifornia.org](http://bchcalifornia.org) or call (775) 463-3634**

### KEEP FOR YOUR RECORDS

I submitted an Application Form for a -

- |  |       |
|--|-------|
| <input type="checkbox"/> 1 Year Individual               | \$60  |
| <input type="checkbox"/> 2 Year Individual               | \$110 |
| <input type="checkbox"/> 3 Year Individual               | \$160 |
| <input type="checkbox"/> 1 Year Family                   | \$75  |
| <input type="checkbox"/> 2 Year Family                   | \$140 |
| <input type="checkbox"/> 3 Year Family                   | \$205 |
| <input type="checkbox"/> Young Adult (18-25 years old)   | \$15  |
| <input type="checkbox"/> Benefactor                      | \$100 |
| <input type="checkbox"/> Patron                          | \$250 |
| <input type="checkbox"/> Mt. Whitney                     | \$500 |
| <input type="checkbox"/> On that form, I also requested: |       |

Associate Memberships: \_\_\_\_\_

My Total Remittance: \_\_\_\_\_

My Check Number: \_\_\_\_\_

Date Mailed: \_\_\_\_\_

### Verifying BCHC Membership by

- 1) BCHC Unit President's reports
- 2) BCHC Membership VP reports
- 3) a self-addressed stamped envelope submitted with this form
- 4) a valid email address





## Big Meadows Horse Camp Sponsors



Your unit pays the cost of maintaining and hosting the Big Meadows horse camp. We are seeking sponsors (10) in total that will be exclusive to the Business/Industry type. Sponsorships are \$500 each per calendar year. Sponsors will be advertised on our web page, our facebook page, at the camp, and in our monthly newsletter. Please show your support to these sponsors. If you or someone you know would like to be a sponsor please contact Joe Kaminski at (559) 909-0505. If interested in being a camp host for this season, contact Jim Knabke at (559) 779-4715.





**IDEA!**  
PRINTING & GRAPHICS INC.

1921 E. Main St.  
Visalia, CA 93292  
PH 559-733-4149  
FAX 559-636-3690

orders@visaliaidea.com



*Now with  
Two Locations  
to Serve Our Community*

*Locally Owned and Owner Operated  
Serving Tulare, Fresno and Kings Counties for Generations*

Salser & Dillard Funeral Chapel - FD 1781  
127 E. Caldwell Ave, Visalia CA 93277  
PHN: 559.635.1144

Salser & Dillard Creighton Chapel - FD 497  
1588 Lincoln Street, Kingsburg CA 93631  
PHN: 559.897.2908

[www.salseranddillard.com](http://www.salseranddillard.com)

**Dr. Karl J Pendegraft, DDS**

5415 w hillsdale vis 93291  
559-733-1097

**JOYCE AND MIC**

**The Pendegraft  
Family**

**Cathie Walker  
Riddle Ranch**

Available



**Tulare County  
Sheriff's  
Posse**



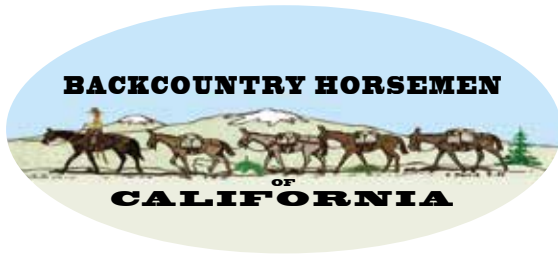
**The ONLY Funeral  
Home with a  
Mounted Honor Guard**  
Creating a meaningful tribute  
for all who have served

[www.salseranddillard.com](http://www.salseranddillard.com)

Salser & Dillard Funeral Chapel - FD 1781  
127 E. Caldwell Ave, Visalia CA 93277  
PHN: 559.635.1144

Salser & Dillard Creighton Chapel - FD 497  
1588 Lincoln Street, Kingsburg CA 93631  
PHN: 559.897.2908

Available



*San Joaquin Sierra Unit*

P.O. Box 25693  
Fresno, CA 93729-5693

## **Objectives & Purpose of the Backcountry Horseman of California**

*From the BCHC Bylaws*

- To improve and promote the use, care and development of California backcountry trails, campsites, streams and meadows; to advocate good trail manners.
- To promote the conservation and utilization of our backcountry resources in concert with livestock transportation.
- To keep the backcountry trails and forage areas open to horseman on all public lands.
- To keep current information before the Corporation membership and its local Units regarding new legis-lation or management plans related to government regulations of the backcountry.
- To support or oppose new proposals, plans and restrictions as related to the interest of horsemen and those persons interested in recreational stock use and enjoying the backcountry.
- To promote the interest of people who, due to health or physical factors, need transportation other than by foot on backcountry trails.
- To promote public awareness and interest in the historical aspect of horsemen and stock in the back-country and to help educate backcountry users on the ways to use the trail and foraged in a manner that conserves the backcountry resources.
- To assist in keeping the public informed of the vital need for a clean backcountry.
- To promote a working relationship with and keep the work and interests of the Corporation before our local, state and federal officials.
- To assist in the formation and continuation of local Units to carry out these purposes.