

# SAN JOAQUIN SIERRA Hoof Prints

January 2022

Issue 44

**San Joaquin Sierra Unit, BCHC**  
**PO Box 25693**  
**Fresno, CA 93729-5693**

**Email:** [membership@bhcocalifornia.org](mailto:membership@bhcocalifornia.org) (membership email only)  
**On the WEB:** [www.bhcocsjsu.org](http://www.bhcocsjsu.org) (SJS Unit) or  
[www.bhcocalifornia.org](http://www.bhcocalifornia.org) (State)

**BACKCOUNTRY HORSEMEN**



**Concerned Men and Women Dedicated to Gentle Use of California Trails and Backcountry**

## Presidents Message



What a fantastic Christmas dinner! Thanks again to Alan and his crew for a wonderful dinner of burgandy beef and bbq chicken. We had a time of great fellowship with many friends. Thanks to all who participated. Congratulations to Ruth Cramer receiving the top hand award for her many hours of hard work. Our

unit continues to stand out due to so many who do so much, thank you.

The after dinner entertainment was once again off the charts with the Gilley Girls and their many talents. What a blessing to take in the wonderful blend of voices, talents and instruments these young ladies shared with us.

Hope you all had a blessed Christmas and look forward to a Great 2022

Thanks to all our unit members who continue to make this such a great unit.

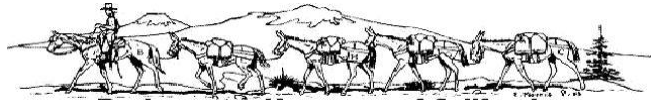
Hope to see you soon at one of the events. Thanks to all who continue to participate and those of you who continue to be part of our unit. Don't forget if you would like to sponser a ride we would be glad to have your input.

*Remember to stay in the saddle. The ground is hard.*

Joe Kaminski  
President



Back Country Horsemen of California



**San Joaquin Sierra Unit**



Come and enjoy Horse Camping at the Madrone Group Horse Camp at

**Montana De Oro State Park**

*The park's name, "Mountain of Gold," comes from the golden wildflowers that bloom in spring. The Park features over 8,000 acres of rugged cliffs, secluded sandy beaches, coastal plains, streams, canyons, and hills, including 1,347-foot Valencia Peak. No dogs are allowed on trails.*

**January 13, 14, 15, 16, 17, 2022**

Camp is available from 2:00pm Thursday 01/13/22 until noon Monday 01/17/22.

There are miles of horse trails along the beach and in the foothills for all levels of riding.

**Potluck:** Join us for a potluck dinner Saturday night. Bring an item to be shared and your own meat item for our grill.

**Cost:** Horse and rider for 4 days is \$ 45.00; Additional individuals \$ 3.00

Madrone Group Camp has 18 corrals, pit toilets, water for horses only, no showers, and no hook-ups.

Contact Information: Gary Van Sickle (559) 288-0301

This is a BCHC-SJSU sponsored event and you must be a member of BCHC to attend.

Reservations are limited and will only be taken upon receipt of signed check with reservation form below.

NAME:		PHONE:	
ADDRESS:			
Please make check payable to <b>BCHC-SJSU</b> and mail with completed reservation form to:  Gary Van Sickle 31831 Road 132 Visalia, CA 93292	EMAIL:		Amount
	Number of Horses with rider	@ \$ 45.00 ea.	\$
	Additional individuals	@ \$ 3.00 ea.	\$
	<b>TOTAL:</b>		<b>\$</b>



## *San Joaquin Sierra Unit*

Board Meeting Nov.2, 2021

Call to order: 6:30

Flag salute

Roll Taken: President: Joe Kaminski, Vice President: Ruth Cramer, Secretary: Carol Kaminski, Treasurer: absent

Directors: Jim Laber, Doug Laber, Steve Naylon, Debbie McDougald, Marcee Hansen Past President Duane Peverill

**Minutes review and approved:** 1st Jim, Doug 2nd.

**Correspondence:**

**Committee reports:**

**Education:**

**Membership:**

**Newsletter:** Articles due Nov. 20. Looking for articles non-club articles, pictures and tips are appreciated.

Rendezvous - Duane and Ruth for pictures. Doug to write. Jim to write Election Ride.

**Public lands:**

**Sunshine:** cards have gone out.

**Shaver Lake:** To be closed

**Big Meadows:** Closed

**OLD BUSINESS.** 1. Christmas dinner - Decorations needed. Duane to blast.

Jan. 6-10 Montana de Oro. No charge for High Sierra for day riders. Jim 1st. Debbie 2nd.

Feb. 17-20 Desert ride - bring your own water.

March 26-27 tentative Gorge - Marcee and Ruth. Work Fri., Ride Sat.

Apr - Parade Desensitize (Steve)

May - Jose' Basin

2. Rendezvous - \$2,398 cost. Profit \$5,157.20 goes to state. Trail Challenge \$2,000, Wine and Cheese - ?

3. Election - January Ranch, Ride at 10. Trail Ride. Lunch @1

4. Insurance - Joe checked. Trailers are covered by tow vehicle. Discussed painting BCHC-SJSU on roof for easy ID by air.

2021 EVENTS

RENDEVZOUS Oct. 29-31.

Nov. 6 Election meeting

Dec. 11 Christmas dinner

**NEW BUSINESS:** Marcee - more presence needed at Gorge. Possible work days needed twice a year. Volunteer agreement needed. Ruth, Marcee and Karen to recon.

2. Jan. General meeting - Possibly Loni Langston?

**Next meeting:** Dec. 7, 2021

**Adjorn:** Jim 1st, Doug 2nd

# DESERT RIDE AT STARLIGHT RANCH NW OF ROSAMOND CA



**February 17-20, 2022**

We normally go into town (Rosamond 1/2 hr away) Friday night for dinner at our favorite Mexican restaurant. There is an Albertsons, convenience stores and gas stations there. A Breakfast to be provided at 9:00am Saturday and Sunday. Potluck Dinner Saturday, we will provide pulled pork or deep pit beef. We need ***RSVP by February 15th.*** Need to bring water for you and your horse and anything else they want to drink. Some beds available but need to secure with us. Bed rolls tents and whatever is needed for general camping. Terrain is simple to difficult depending on trail with all trails being packed to loose desert soils that are easy on the hoofs. Coyotes and Jack rabbits mice and desert rats for local animals. There are snakes but I have never seen one and we have done a lot of cross country out there. Most of the trails/roads are a gradual climb but depends on what you want to do. There is one that goes up to the PCT but would be a long ride. Clean up needs to be done behind horses and distribute outside fence. Take out all other that you bring in. There is a outhouse on the property and a flush toilet in the house. May want to bring your own toiletries to be safe.

The gate at the ranch will be open at noon on the 17th and property will be cleared and gate closed by 2pm Sunday the 20th.

**Directions:** Starlight Ranch is already tagged on google maps if you use that. The map shows traveling on what is called Aqueduct RD but you want to go 30' further on Backus

Rd to what we call Upper Aqueduct RD where you will see a large Rock painted with a Smiley Face. Although the lower road can be used to get there, there are more obstacles and a large dip that larger trailers may have issues with.

Take CA Hwy 99 south to CA Hwy 58 East out of Bakersfield to Tehachapi about 43 miles. Exit at Tehachapi Blvd and go Right on Tehachapi Blvd. Loves Truck Stop will be on your Right. Continue on Tehachapi Blvd for 1 mile and go Right on Willow Springs Road and follow for 16.0 miles where you will turn Right on Backus RD. Backus RD is paved for about 1.2 miles When you come to the end of the pavement you will see a dirt road to the right that you will proceed on. The rest of the trip is on dirt roads. You will continue on Dirt Backus RD over a short bridge and on to Upper Aqueduct RD. You will see a large rock painted with a Smiley Face. Turn left and continue on Upper Aqueduct RD for 3.6 miles to 140th St. There will be a curved dirt road leading to the right onto 140th St and most will want to take that. You will see a sign on your left that says Starlight Ranch. Go left before the sign and drive straight back about 100 feet and through the gate to the ranch. You will need to bring water for overnight stays. The ranch is cyclone fenced but horses/stock will need to be tied up. There are just 3-4 highline areas first come first serve. There are some bed opportunities in the house and out buildings on the property but please call to claim. Jim and Doug Laber will be hosting the ride at the Starlight Ranch which is owned by Family. We will have a generator there that gives us lights in the house in the evenings. There is a large patio and fire pit for gatherings. Firewood if you have it will help and we will be bringing some out with us. It can get very cold and or very windy at the ranch so be prepared for that. Hope to see you there!

Jim Laber, Cell: 559-250-7906,  
Doug laber, Cell 559-786-6634

LAT: 34.92479 LON: 118.382792

**Note: Google tries to get you to turn prior to Rd 140. Do not take that turn. That's the hard way.**

# 2021-2022 Calendar

Board Meetings are on the 1st Tuesday of the month. All members are welcome to attend. Board meetings start at 6:30 pm at the Clovis Elks Lodge, 535 Woodworth Ave. (Bullard & Woodworth).

Calendar & Ride schedule is on-going, and new events and rides will be published when confirmed. Note: Dates and events are subject to change or cancellation; calling the contact person is recommended or checking [www.bchcsjsu.org](http://www.bchcsjsu.org)

## 2021

Aug 3	Board Meeting
Aug 21	Poker Ride Shaver Lake Fishing Camp access road.
Sept 7	Board Meeting
Sept 11	BCHC SJSU Memorial Ride Location TBA
Oct 5	Board Meeting
October 7-11	Coastal Mounted Unit MDO (non BCHC event)
Oct 29-31	Rendezous
November 2	Board Meeting
November 6	Play Day/General Meeting Elections Meeting.
November 20	Fredi's celebration of life. Clovis Veterans Memorial at 2:00 pm
December 7	Board Meeting
December 11	Christmas Dinner

## 2022

January 6-10	Montana de Oro
February 17-20	Desert Ride - Starlight Ranch

Is there any activity that you would like to sponsor? We are always looking to improve the club and making it fun for all members. Please submit your ideas, [kaminskiclans@gmail.com](mailto:kaminskiclans@gmail.com). You may call 559.909 0505 and I will get back to you.

Joe Kaminski  
President

Remember to check for any Unit updates at our Web Site:

[www.bchcsjsu.org](http://www.bchcsjsu.org) for the San Joaquin/Sierra Unit,

[www.bhcalifornia.org](http://www.bhcalifornia.org) for the State Web Site

*The purpose of this publication is to keep its members informed on important issues that affect all horsemen and to inform the membership on up-coming events within the unit. The views and opinions expressed in this newsletter are those of the editor & authors and not necessarily shared by BCHC.*

## GOOEY CARAMEL CINNAMON ROLLS

*Waking up on a crisp morning, inside your warm and cozy tent is a moment I treasure every camping trip. The only thing that can make that moment better is the thought of warm, gooey, scrumptious caramel cinnamon rolls just a quick 30 minute cook time away from my mouth.*

### INGREDIENTS:

- 18 Cinnamon Rolls, from a tin, you will need multiple
- ½ cup brown sugar
- 1 teaspoon cinnamon

- ½ cup graham cracker crumbs

### TOPPING:

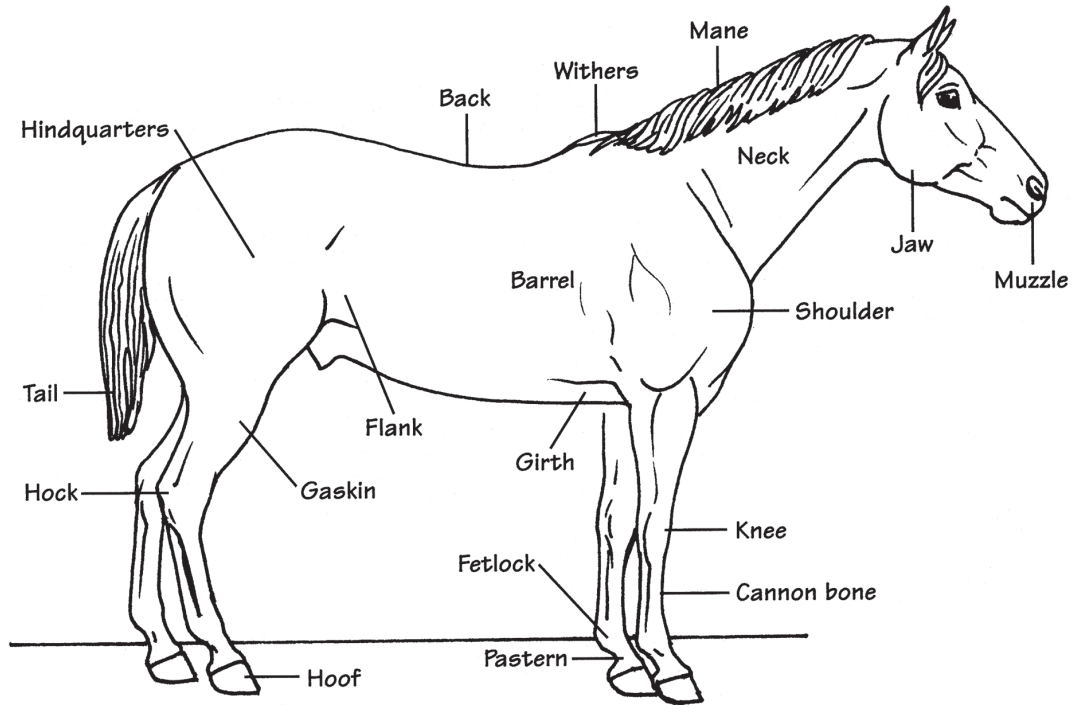
- Frosting that comes with cinnamon rolls
- ½ cup caramel ice cream topping



### INSTRUCTIONS:

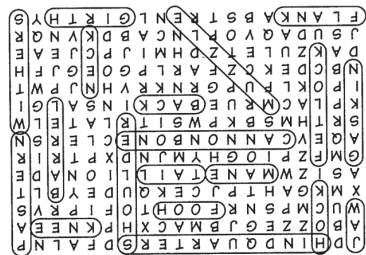
1. Cut each roll into 4 pieces and arrange in the bottom of a 14-inch Dutch oven lined with aluminum foil or sprayed with non-stick cooking spray.
2. In a bowl combine brown sugar, cinnamon, and cracker crumbs.
3. Sprinkle evenly over cut rolls.
4. Cover with lid and bake at 350°F 25-30 minutes.
5. For icing combine frosting with caramel topping. Drizzle over cinnamon rolls while still warm.

# KIDS CORNER



## Parts of the Horse Word Search

J D H I N D Q U A R T E R S D F A L N P  
 A B O Z Z E G J B M A C X H P K N E E A  
 W U C M P S N R F O O H T O F I P R V S  
 X M K G A H T P J C E K Q U D E Y B L T  
 A S I Z W M A N E T A I L L I O N A D E  
 G M F Z P I O G H Y M J N D X P T R I R  
 A Q E V C A N N O N B O N E C L E R S N  
 S R T H M S B K P W S I T R L A T E L W  
 K P L A C M R U E B A C K I N S A L G I  
 I P O K L F U P G R N K R V H N J P W T  
 N B C D E K C Z F A R L P G O E G J F H  
 D A K Z U L E T Z D H M I J P C J E A E  
 J S U D A Q V O P L N C A B D K V N Q R  
 F L A N K A B S T R E N L G I R T H Y S



Answer:

# CHRISTMAS DINNER 2021

Enjoy pictures from our Christmas Dinner at the Elks Lodge. Great food provided by Alan and Diane. Great Company. Great Raffle items. Great evening entertainment by the GillyGirls. It was a great evening. If you couldn't make it...you missed a great evening.

*Photos provided by Skyler, Jan, Susan and Duane.  
Thanks to all the helped put on this event.*





# CHRISTMAS DINNER 2021



## TOP HAND AWARD

Unit Presidents select the individual(s) who provided the greatest service to the President and his/her Unit. This year BCHC-San Joaquin Sierra Unit award goes to Ruth Cramer for 2021. Congratulations!



# SUNSHINE CORNER

Two new members.

Sherry Smiley, Clovis  
Heidi Sawyer, Wilton.

We have new associate  
members as well.

Lisa and Ness Sanli, Bakersfield



## The Lighter Side



## WELCOME TO OUR NEW MEMBERS!

April 2021

Eric, Daphne, Angela Person, Clovis

May 2021

Cathy Albertson, Fresno

August 2021

Janet Smith, Clovis

Sonya Onorati Prys, Lemoore

September, 2021

Julie Vogt, Visalia

Joe Machado, North Fork

We Love To Make You Look Good!

**IDEA!**  
PRINTING & GRAPHICS INC.

**(559) 733-4149**

Fax: (559) 636-3690

[orders@visaliaidea.com](mailto:orders@visaliaidea.com) • [www.visaliaidea.com](http://www.visaliaidea.com)

1921 E. Main Street • Visalia, CA 93292

Mon.-Fri. 9am-5pm

*Contributing to your success,  
one impression at a time!*



# HOMEMADE FIRE STARTERS

By Jim Laber

Have you ever wanted all those socks back that somehow disappear in the wash? Are you tired of trying to start a fire in the most difficult times? Have you ever needed a little heat or light in the back country? Well I stumbled on a solution shared on Facebook and was immediately pleased with the results. It does require that you start saving a few things. At minimum you will need a paper egg carton, a bunch of dryer lint, which we save in a gallon ziplock bag, and some wax. I use paraffin wax which is known to all the canning fans, but I always throw in all the candles in the house that have lost their appeal, scent, or wick. The only place I seem to be able to find paraffin is Walmart here in Visalia. If like me you use the microwave you will need to make sure any used candles have the metal removed that is usually used as the wick base in most candles for home use.

So you have your supplies ready and your melting your wax. Remove the lid (cut with scissors) to the egg carton and the closure lip and toss. Fill all the egg spaces in the carton with as much lint as you can and pack it down. The paper carton offers enough friction for all the lint fiber to stay down. If it's not staying down you probably have a bit too much. Make sure to cover your counter with newspaper or a piece of parchment paper so you don't make a mess with the wax.

I use a 8 cup pyrex beaker to melt the wax in, and I normally make 5-6 dozen at a time which even giving a bunch away last me 2-3 years. So your wax is melted and your cartons are loaded with lint and butted up against each other (you will spill). A BBQ glove or oven mitt comes in very handy at this point. You will want to very carefully start pouring down the center line of the carton slowly soaking the middle peak which there are five down the center of the carton or 10 in a carton of 18. The reason for this is this peak after you cut the carton into 12 fire starters will be the wick you light to get it going. Now your ready to soak the lint. Do not fill the whole cup a little wax goes a long way but you do want to get all the lint wet with wax. I used 2 boxes of the paraffin in the pictures that I bought at Walmart to make 5-1/2 dozen.

I usually do this in the winter and take them outside and let them cool overnight after pouring the wax. After the wax is set up I use a serrated knife and cut them apart. You get 12 from each carton and you do not want to trim them up at all. I put each dozen in a ziplock and put one in the trailer, one in the back country necessity bag, and one at home for those evening fires in the winter. They are very easy to light and as long as you have dry wood and good kindling that fire will soon be roaring using only 1. In tougher circumstances I have used 2 in cold wet circumstances. These work extremely well as fire starters because the lint acts like a thousand wicks in every starter. They also have many good emergency uses where a little light, heat, or fire are needed. Please keep that in mind. I hope you will give them a try and remember you are shining a light on the missing socks in the laundry every time you use them. The only extra cost I had in making 5-1/2 dozen was \$7.00 for the 2 boxes of paraffin, and my time. Enjoy and keep it safe!





[www.bchcsjsu.org](http://www.bchcsjsu.org)

Make sure you check out our website for updates on the Home page, Calendar page, and Newsletters. We also have a Photos page of our latest activities.

If you have any photos send them to Duane at [wpeverill@sebastiancorp.net](mailto:wpeverill@sebastiancorp.net)

[www.bchcsjsu.org](http://www.bchcsjsu.org)

## Advertising Rates

### Classified Ads

\$.10/word with a 20 word minimum (\$2.00),  
\$.50 a line after that.

### Display Ad Rate per issue

Business Card Size, \$8.00,	1/2 page, \$35.00,
1/4 page, \$20.00,	Full Page, \$50.00

Prices are subject to change without notice. All prices are for one month, due the 10th of the month. Editor reserves the right to refuse inappropriate ads.

**All paid Ads include an E-mail Blast to all members with current emails**

## Attention

Your SJS Unit Board of Directors would like to invite any of our members to attend the monthly Board meetings or General meetings. It is important all directors have the same opportunity to hear the information, concerns or suggestions you wish to share. We are volunteers doing our best to keep our Unit informed and working smoothly. Refer to the newsletter for the information regarding times and location of upcoming meetings.

Respectfully,  
Joe Kaminski

**GUARANTEE**  
com  
real estate services



Your Full Service Realtor  
**Jessica Gabrielson**  
Realtor, GRI, SRES, SFR, ASP  
DRE#01338726

559.905.7724  
Office 559.322.6020  
Fax 559.321.6044  
[jgabrielson@guarantee.com](mailto:jgabrielson@guarantee.com)

1275 N. Willow Ave.  
Clovis, CA 93619



**"I don't horse around when it comes to selling your property"**

## "Travel Advantage"

Dear BCHC Members

Check out the latest edition of "Travel Advantage", @ [www.ytbtravel.com/bchc](http://www.ytbtravel.com/bchc) a travel newsletter full of terrific deals from YTB, our BCHC travel partner. The newsletter is chock full of great ideas for anyone's next getaway! You can download an icon to your computer desktop for instant connection to the BCHC Getaway website.

Please forward "Travel Advantage" newsletter to your friends and family and other BCHC supporters. The more we get the word out, the more people will use the BCHC Getaway travel site to take advantage of great rates on hotels, flights, rental cars and other travel-related items, the more BCHC will earn for our Treasury!!

Please do not hesitate to contact me if you have any questions about the travel site, how it works or what BCHC earns by participating in this great opportunity. Thank you for supporting and promoting BCHC Getaway!!

C.J. Hargreaves  
BCHC Editor/Travel Site Coordinator  
[cjohargreaves@verizon.net](mailto:cjohargreaves@verizon.net)

BACKCOUNTRY HORSEMEN OF CALIFORNIA

A COMMON SENSE GUIDE FOR A

# Safe And Enjoyable Trail Ride

SAFETY is PRIORITY

## STAGING AREA

- ◆ Be on time and park considerately. Latecomers hold up everyone else.
- ◆ Tack up, bring halter with lead rope, water, lunch, jacket, or whatever else you need.
- ◆ Clean up manure, hay or litter in staging or camping area.
- ◆ Use ribbons to denote special situations: **red ribbon** if your stock tends to kick, **green ribbon** to signify a novice stock or rider, and a **blue ribbon** should be used to denote a stallion.
- ◆ Use of helmets is a personal choice of the rider.

## WHILE ON A TRAIL

- ◆ Trail boss is the boss. If you are riding in any way which the trail boss feels poses a danger to other riders, you will be asked to modify your behavior or leave the ride.
- ◆ Stay behind the trail leader (usually but not always the trail boss) and in front of the designated drag rider. If you are having problems call out for a stop.
- ◆ The use of a helmet is a personal safety choice of the rider.
- ◆ When mounting to ride, keep your horse still until everyone is mounted.
- ◆ You must have permission from the trail boss before bringing a dog or a stallion.
- ◆ Most Group rides are walk only, an exception would be bees, etc... but as needed, rides will be divided into the 'Slow Group' which walks only and the 'Fast Group' which includes gaited and endurance type horses. Ride in the group that fits your horse's type and conditioning.
- ◆ Please don't crowd the horse in front of you. Try to leave a horse length of open space between horses, even at stops. Be sure to ask riders in front and back of you about their animal's comfort level.
- ◆ Call back trail obstacles and/or low branches to riders behind you.
- ◆ Leave gates as you find them. When a rider dismounts to open a gate, at least a portion of the other riders wait until he/she has remounted before leaving.

- ◆ Crossing water, the first horses are allowed to drink, then move up the trail, stop! Allow more horses to drink. The group does not leave until all have watered.
- ◆ In difficult or steep terrain, allow more space and keep moving. If you need to stop for any reason, wait until the trail leader finds a suitable place where all can safely stop.
- ◆ Be courteous and friendly to other trail users. While passing - safety for all parties is the priority. Greet other users to initiate a conversation so the animals can identify a non-threatening situation. If possible, a hiker should step to the downhill side. This provides a safer passing for both hiker and stock.
- ◆ Stay on the trail; obey agency rules; respect private property.
- ◆ When riding along a road, ride with the traffic. When crossing roads, cross abreast rather than single file, post riders in front and post riders behind the group to alert traffic.
- ◆ Riding side by side is permissible when passing in the same or opposite direction, if the trail is wide enough, and all trail rules are observed.
- ◆ No smoking allowed on trails.

## TIPS FOR BREAKS OR LUNCH STOPS

- ◆ Water your stock during breaks or stops. Be cautious as to the amount of water given because some animals that are overheated can ty-up. Animals, while working, need as much as they will drink.
- ◆ Smoking is allowed during breaks in a safe area.
- ◆ Tie your horse safely. Loosen the cinch slightly during a long break. Do a safety check before remounting.
- ◆ When tying your horse, be sure there is ample room for other users to pass safely by your stock. Be sure you are not blocking the trail.
- ◆ If there is no garbage can, pack your trash out.
- ◆ Alcohol use can make riding dangerous, use discretion.
- ◆ The drag rider needs to remove trail flagging at the end of ride.



## **2021 OFFICERS/DIRECTORS**

### **President**

Joe Kaminski, 559.909 0505  
kaminskiclan@gmail.com

### **Vice President**

Ruth Cramer, 559 417 3878  
racramer@outlook.com

### **Secretary**

Carol Kaminski, 559-733-9170  
kaminskiclan@gmail.com

### **Treasurer**

Gary Van Sickle, 559-288-0301  
gwvansickle@outlook.com

## ***DIRECTORS***

Term Expires at end of year:

Marcee Hansen, 559-977-9472  
jamn4jabez@yahoo.com  
2022

Susan Van Sickle 559-779-4105  
gwvansickle@gmail.com  
2022

Jan Mikkelson,  
jessecowboy@comcast.net  
2022

Jim Laber, 559-250-7906  
jimlaber218@gmail.com  
2021

Doug Laber, 559-786-6634  
douglaber@gmail.com  
2021

Steve Naylon, 559 284-7478  
scnaylom@hotmail.com  
2021

Debbie McDougald, 559 905 268  
ladypacker@netptc.net  
2021

## **COORDINATORS**

### **Membership/Mailing Coordinator**

Jan Mikkelson,  
jessecowboy@comcast.net

### **Public Lands Liaison**

Joe Kaminski, 559-733-9170  
kaminskiclan@gmail.com

### **Newsletter Editor**

Jim Laber, 559-250-7906  
jim@visaliaidea.com

### **Education Coordinator**

OPEN

### **Sunshine**

Pat Peverill, 559-824-1119  
ppeverill@sebastiancorp.net

### **Shaver Lake Camp Host**

Ruth Cramer, 559-417-3878  
racramer@outlook.com

### **Web Wrangler**

Duane Peverill, 559-908-3138  
wpeverill@sebastiancorp.net

### **Facebook**

Paige Stambach, 559-909-3930  
paigestambach@gmail.com

### **Big Meadows Horse Camp**

Jim Knabke, 559-299-3254  
jjknabke@comcast.net

## **ADVISORS**

### **Past President**

William Duane Peverill  
559-908-3138  
wpeverill@sebastiancorp.net



# BCHCSJSU SHIRTS

On the trails we work and ride we share the trail with others, that at times have trouble seeing us because of shadows and various modes of transportation used, especially in non wilderness designated areas.

For that reason your unit board of directors has made this shirt available for safety on trail rides and work parties as well as a way to promote our unit and its activities.

## Order you BCHCSJSU Trail Work/Riding Shirt

To order call Gary Van Sickle with size and quantity.

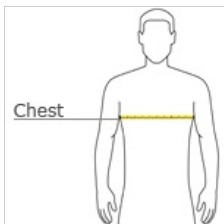
\_\_\_\_\_ X \$14.65 each \_\_\_\_\_  
 (Qty) (Total)

Make checks payable to BCHCSJUS and send to:

Attn: Gary Van Sickle  
 BCHCSJSU  
 P.O. Box 25693  
 Fresno, CA 93729-5693



### HOW TO MEASURE



**CHEST**  
 Measure under the arm and around the fullest part of the chest with arms down, keeping tape horizontal.

### SIZE CHART

	S	M	L	XL	2XL	3XL	4XL	5XL
Chest	34-36	38-40	42-44	46-48	50-52	54-56	58-60	62-64

**Backcountry Horsemen  
of California**



**MAIL TO: BCHC  
MEMBERSHIP  
1280 State Rt. 208  
Yerington NV 89447**

**MEMBERSHIP  
APPLICATION**

**PARENT UNIT AFFILIATION: (Select and CHECK a Unit as your Affiliation)**

**New**    **Renewal**  
 **Change**

*(indicate change)*

<input type="checkbox"/> Antelope Valley	<input type="checkbox"/> Kern Sierra	<input type="checkbox"/> North Bay	<input type="checkbox"/> Santa Ana River
<input type="checkbox"/> Eastern Sierra	<input type="checkbox"/> Lake-Mendo	<input type="checkbox"/> Pacific Crest	<input type="checkbox"/> Sequoia
<input type="checkbox"/> High Country	<input type="checkbox"/> Los Padres	<input type="checkbox"/> Redshank Riders	<input type="checkbox"/> Shasta Trinity
<input type="checkbox"/> High Sierra	<input type="checkbox"/> Mid Valley	<input type="checkbox"/> Redwood	<input type="checkbox"/> Sierra Freepackers
<input type="checkbox"/> Kern River Valley	<input type="checkbox"/> Mother Lode	<input type="checkbox"/> San Diego	<input type="checkbox"/> Sutter Buttes
		<input type="checkbox"/> San Joaquin Sierra	<input type="checkbox"/> Top of the State

DCTR (your Membership)

MEMBER'S NAME – No Business Names, Print Clearly   SPOUSE/Co-MEMBER'S NAME – MUST SHARE SAME ADDRESS

Street Address/PO Box

City \_\_\_\_\_ State \_\_\_\_\_ Zip Code (full 9 digits if known) \_\_\_\_\_ Area Code \_\_\_\_\_ Phone number \_\_\_\_\_

Email Address: \_\_\_\_\_ (please print legibly)

Donation to BCHC Education Fund (tax deductible) \$ \_\_\_\_\_

Total Enclosed: \$ \_\_\_\_\_ Check No. \_\_\_\_\_

**Parent Unit Membership Types (Check one)**

Individual \$50    Family \$60    2 Year Individual \$90    2 Year Family \$110    3 Year Individual \$125    3 Year Family \$150

Young Adult (18-25 years old) \$15 – Benefactor \$100 – Patron \$250 – Mt. Whitney \$500

Associate Memberships: An Additional \$15 PER UNIT is added to your Parent Unit Dues

**Associate Memberships Unit Affiliations MAY NOT BE FOR THE SAME UNIT AS YOUR PARENT UNIT**

Associate Membership for: \_\_\_\_\_ \$15.00/Unit  
Unit Name (from above list)

Associate Membership for: \_\_\_\_\_ \$15.00/Unit  
Unit Name (from above list)

\_\_\_\_\_  
Add additional choices here

**Please clip form along dashed line and keep the below portion for your records**

**Parent BCHC Membership Types**

Individual, Family, (Shared\*), Benefactor, Patron, and Mt. Whitney

A Parent Membership is affiliated with a single Local Unit. BCHC members may NOT hold more than ONE active Parent Membership.

\*A SHARED Membership is for two adults with differing last names who share a common address.

**ASSOCIATE MEMBERSHIPS**

These special Memberships are only available to persons already holding Parent BCHC Membership. No one may sign up for an Associate Membership without 1) having registered one of the Parent Membership types, and 2) having selected Parent Unit affiliation.

**Complete information regarding BCHC Membership is available on the MEMBERSHIP TAB at [bchcalifornia.org](http://bchcalifornia.org) or call (775) 463-3634**

**KEEP FOR YOUR RECORDS**

I submitted an Application Form for a new -

<input type="checkbox"/> Individual Membership	<b>\$ 50.00</b>
<input type="checkbox"/> Family (Shared) Membership	<b>\$ 60.00</b>
<input type="checkbox"/> Young Adult (18-25 years old)	<b>\$ 15.00</b>
<input type="checkbox"/> 2 Year Individual	<b>\$ 90.00</b>
<input type="checkbox"/> 2 Year Family	<b>\$110.00</b>
<input type="checkbox"/> 3 Year Individual	<b>\$125.00</b>
<input type="checkbox"/> 3 Year Family	<b>\$150.00</b>
<input type="checkbox"/> Benefactor Membership	<b>\$100.00</b>
<input type="checkbox"/> Patron Membership	<b>\$250.00</b>
<input type="checkbox"/> Mt. Whitney Membership	<b>\$500.00</b>

On that form, I also requested:  
 \_\_\_\_\_ Associate Memberships                      \$ \_\_\_\_\_  
 My Total Remittance:    \$ \_\_\_\_\_  
 My Check Number: \_\_\_\_\_  
 Date Mailed: \_\_\_\_\_

**Verification of BCHC**

**membership** is available via (1) BCHC unit president's reports (2) BCHC membership chair reports (3) a self-addressed stamped envelope submitted with this form or (4) a valid email address



# Big Meadows Horse Camp Sponsors



Your unit pays the cost of maintaining and hosting the Big Meadows horse camp. We are seeking sponsors (8) in total that will be exclusive to the Business/Industry type. Sponsorships are \$500 each per calendar year. Sponsors will be advertised on our web page, our facebook page, at the camp, and in our monthly newsletter. Please show your support to these sponsors. If you or someone you know would like to be a sponsor please contact Joe Kaminski at (559) 909-0505. If interested in being a camp host for this season, contact Jim Knabke at (559) 779-4715.

**CARA'S BLUEPRINT EXPRESS**  
**559.901.3936**  
 2109 East Main Street • Visalia, CA 93292  
 email: CarasBlueprint@sbcglobal.net  
[www.carasblueprint.com](http://www.carasblueprint.com)

www.  
visaliaidea.com

1921 E. Main St.  
Visalia, CA 93292  
 PH 559-733-4149  
 FAX 559-636-3690

orders@visaliaidea.com

BACKCOUNTRY HORSEMEN OF CALIFORNIA  
**HIGH SIERRA UNIT**

**Dr. Karl J Pendegraft, DDS**  
 5415 w hillsdale vis 93291  
 559-733-1097

**Cathie Walker**  
**Riddle Ranch**

---

**Clark's Leather Shop**  
 559-999-9861

**Jesse & Cowboy**

**Available**

**Available**



*San Joaquin Sierra Unit*

P.O. Box 25693  
Fresno, CA 93729-5693

## **Objectives & Purpose of the Backcountry Horseman of California**

*From the BCHC Bylaws*

- To improve and promote the use, care and development of California backcountry trails, campsites, streams and meadows; to advocate good trail manners.
- To promote the conservation and utilization of our backcountry resources in concert with livestock transportation.
- To keep the backcountry trails and forage areas open to horseman on all public lands.
- To keep current information before the Corporation membership and its local Units regarding new legis-lation or management plans related to government regulations of the backcountry.
- To support or oppose new proposals, plans and restrictions as related to the interest of horsemen and those persons interested in recreational stock use and enjoying the backcountry.
- To promote the interest of people who, due to health or physical factors, need transportation other than by foot on backcountry trails.
- To promote public awareness and interest in the historical aspect of horsemen and stock in the back-country and to help educate backcountry users on the ways to use the trail and foraged in a manner that conserves the backcountry resources.
- To assist in keeping the public informed of the vital need for a clean backcountry.
- To promote a working relationship with and keep the work and interests of the Corporation before our local, state and federal officials.
- To assist in the formation and continuation of local Units to carry out these purposes.