

# SAN JOAQUIN SIERRA

## Hoof Prints



November 2019

Issue 20

**San Joaquin Sierra Unit, BCHC**  
**PO Box 25693**  
**Fresno, CA 93729-5693**

**Email:** [membership@bhcocalifornia.org](mailto:membership@bhcocalifornia.org) (membership email only)  
**On the WEB:** [www.bhcsjsu.org](http://www.bhcsjsu.org) (SJS Unit) or  
[www.bhcocalifornia.org](http://www.bhcocalifornia.org) (State)

**BACKCOUNTRY HORSEMEN**



**OF CALIFORNIA**

**Concerned Men and Women Dedicated to Gentle Use of California Trails and Backcountry**

### Presidents Message



Fall is here and temperatures are dropping soon it will be time to start using firewood gathered this summer. Time to take inventory on gear and make any needed repairs. Lower elevation rides are now more inviting with the

lower temperatures.

This years election meeting was well attended with a great list of directors to choose from. How appreciative we are for those who ran for the four open positions. The state board meeting was held in Oct. and attended by Ruth Cramer and Muriel Holland.

Mark your calendars for the Dec. 14 Christmas dinner with music provided by John Pemberton. At the dinner tickets will be on sale for the Dave Stamey concert which will be held in January. To purchase tickets now contact Duane Peverill. Plan on coming out and having a good time.

*Remember to stay in the saddle,  
the ground is hard,*

Joe Kaminski  
President

## BIG MEADOWS-AN AWESOME 24 HOURS

Our San Joaquin-Sierra unit was having a Big Meadows ride and camp out the weekend of September 7th and I wanted to go even if it was just for the day. The moment we pulled into camp I felt this huge sense of 'coming home'. Big Meadows has always been special to me because of the many years and great times we have spent with awesome members and friends, some sadly no longer with us. After a two year absence I had missed it so much! Having lost my beloved horse last summer, I was in such an emotional slump, and had no motivation to go anywhere he and I used to go. This year I was excited to introduce my new horse, Raina Starlight, to one of my favorite places to ride. Belinda Gonzalez was there to greet John, me, the horses and our dogs. Recovering from surgery, she was easing herself back into riding. I was so happy to see her there with her horse, George, and black Lab, Ace. Joe and Carol Kaminski were camp hosts and Steve Naylon and Jim Knabke had gone riding up to Weaver Lake. Until we got there, we were unsure if we would stay overnight, but there were two open pens so we quickly set up camp to stay for Saturday night. YAY! I was thrilled! Then the three of us us took a ride on the Starlight trail, my favorite, because it is a nice easy ride and not too long for an afternoon.

Later in the day, Marcie Hansen, Karen Daughtry, Raeann James and Bethany Bush arrived, saddled, and headed up the Weaver trail. Steve came back early after his horse got a nasty cut near his hocks on the second water crossing, which is always a challenge for horses.

Jim and Doug Laber were there with various visiting family members along with their adorable grandchildren.

That evening we had our little propane camp 'chef' going and huddled near the fire. The next morning, ice was on the water but the horses did fine. After breakfast Belinda, John, Jim and I rode to the Weaver trail head. I was very pleased when my mare crossed the bridge, coming and going, waded through the water belly deep, and stepped over each log without jumping them.

I was very pleased to see the camp doing so well. A later winter left grass on the ground and all the pens were in great shape. Due to generous donations along with work by dedicated members and other equestrians, our valued horse camp has remained cared for, well maintained and most importantly, open.

I just hated to pack up and leave and could have stayed for a week if our schedule allowed it. Chances are we won't make it up again until next year, so our awesome 24 hour stay will have to hold us over until then.





*San Joaquin Sierra Unit*

Board Meeting Aug.7, 2019

Call to order: 6:30

Flag salute

Roll Taken: President: Joe Kaminski, Vice President: Ruth Cramer, Secretary: Carol Kaminski,

Treasurer: Gary VanSickle, absent

Directors: Sue Van Sickle, Jim Knabke, Steve Naylon, Jim Laber, Debbie McDougald, Muriel Holland

Past President: Duane Peverill

**Minutes review and approved:** 1st Jim L., 2nd. Duane

**Correspondence:**

**Committee reports:**

**Education:** 2 more rides have been scheduled.

**Membership:**

**Newsletter:** Articles due Aug. 20. Need clarification for non-member website availability. Joe and Carol will write Tamarack and Marcee and Audrey will write MDO. Duane shares newsletter with others on their sites.

**Public lands:** No fires in parks so far this year. Electric bikes in parks gaining momentum. BCHC-SJSU against this.

**Sunshine:** John and Jenise Cunningham-sympathy card sent with loss of her father.

**Shaver Lake:** Nice letter received from state BCHC thanking for use of Shaver camp for state meeting. Chuck (SCE) willing to fell trees to improve area for parking and camping. Will also level. Permission was given to drive to Eagle Point campground for a ride. He is willing to ride with Cara & Ruth to mark trails for ride. Bridges need work. Sept. 7 is a work day for Shaver trails. If interested see Ruth. Marcee and Karen rode trails. Marcee to ride with Ruth to check trails.

**OLD BUSINESS.** 1. Big Meadows- hosts in place. Donation envelopes to be taken up. Water is good.

2. Dave Stamey-new date. Jan. 18,2020. Conflict on Dave's part. Doors to open at 6:45. Concert to start 7:30. Tickets available in Oct.

3. Events-Tamarack was successful. Ride will continue. Discussed colored T-shirts for rides. Safety issue. Doug will check on. Big Meadows ride will be Sept. 7. Chamberlain work party/beginner pack trip moved to Sept. 12-15.

4. Christmas dinner- auction items needed.

**NEW BUSINESS:** 1. Muriel discussed ride safety.

2. Web page- lap top and projector needed for next meeting. (password).

3. Board meeting- Jim L. is asking for meetings to be changed to 4th Wed. of month. Ruth motioned. Steve and Muriel 2nd. Passed.

**Calendar review:** Next meeting Sept.25, 2019

**Adjourn:** 7:40 Jim 1st , Duane. 2nd

Next meeting to discuss Chamberlain pack trip for raffle at Christmas.

Marcee to discuss for education a merrit badge.

## 2019-20 Calendar

Board Meetings are on the 1st Wednesday of the month. All members are welcome to attend. Board meetings start at 6:30 pm at the Clovis Elks Lodge, 535 Woodworth Ave. (Bullard & Woodworth).

Calendar & Ride schedule is on-going, and new events and rides will be published when confirmed.

Note: Dates and events are subject to change or cancellation; calling the contact person is recommended or checking [www.bchcsjsu.org](http://www.bchcsjsu.org)

### 2019

- August 2-4 Diana Sorensen Memorial Tamarack Camp Out/Ride Joe Kaminski 559 733-9170
- August 7 Board Meeting
- August Cancelled General Meeting
- Sept 25 Board Meeting
- Sept 7 Big Meadow Ride (members only) In saddle 10:00 No Host  
Joe Kaminski 559 733-9170
- Sept 12-15 Chamberlain Camp work party and beginning pack trip. Joe Kaminski 559 733-9170
- Oct 5 Eagle Point Ride Shaver Lake (members Only)  
Cara 559-901-5364. [carasblueprint@sbcglobal.net](mailto:carasblueprint@sbcglobal.net)
- Oct 10-14 CCMA Poker Ride/Camp out MDO (Non Unit)
- Oct 16 Elections/General Meeting Fredi Chrismans Info to follow
- Oct 23 Board Meeting
- Nov 5 Board Meeting
- Nov 27 Board Meeting
- Dec 14 Christmas Dinner
- Dec 3 Board Meeting

Work Parties TBA

### 2020

- Jan 18, 2020 Ted Fischer Memorial Dave Stamey Dessert Concert.

Is there any activity that you would like to sponsor? We are always looking to improve the club and making it fun for all members. Please submit your ideas, [wpeverill@sebastiancorp.net](mailto:wpeverill@sebastiancorp.net). You may call 559-908-3138 and I will get back to you.

Joe Kaminski  
President

Remember to check for any Unit updates at our Web Site:  
[www.bchcsjsu.org](http://www.bchcsjsu.org) for the San Joaquin/Sierra Unit,  
[www.bchcalifornia.org](http://www.bchcalifornia.org) for the State Web Site

*The purpose of this publication is to keep its members informed on important issues that affect all horsemen and to inform the membership on up-coming events within the unit. The views and opinions expressed in this newsletter are those of the editor & authors and not necessarily shared by BCHC.*

## 5th Wheel for Sale

Jere and Carol Bartz are selling a 5th Wheel trailer.  
Call 559 924-8989 and leave message. \$6500.00

## BACK COUNTRY FISH TACOS

### INGREDIENTS:

- Small Flour Tortillas 8"
- Cabbage
- Tapitio Hot Sauce
- 6-good size trout
- Basil Jalapeno Triscuits-9 crackers
- Frito barbecue Twisters-1 hand full
- Sweet Crème 2 Tablespoons
- Mayonnaise- 1 Tablespoon
- Butter-1/4 lb
- Shredded Cheese- to taste

### INSTRUCTIONS:

Clean and fillet Trout. Take 9 Triscuit crackers and hand full of Frito barbecue twisters and finely crush. Put Trout fillets in zip lock and add sweet creme and mayo and shake to evenly coat. Open bag and add finely crushed cracker twister mix. Seal bag and shake to mix. Melt butter in 8 inch skillet to boil and Placed breaded trout mixture in skillet. When done place in a tortilla, cooked trout, shredded cabbage, cheese, and Tapitio to taste.

Enjoy



# SUNSHINE CORNER



## The Lighter Side

The devout cowboy lost his favorite Bible while he was mending fences out on the range. Three weeks later, a horse walked up to him carrying the Bible in its mouth. The cowboy couldn't believe his eyes. He took the precious book out of the horse's mouth, raised his eyes heavenward and exclaimed, "It's a miracle!" "Not really," said the horse. "Your name is written inside the cover."

We Love To Make You Look Good!

# IDEA!

PRINTING & GRAPHICS INC.

**(559) 733-4149**

Fax: (559) 636-3690

[orders@visaliaidea.com](mailto:orders@visaliaidea.com) • [www.visaliaidea.com](http://www.visaliaidea.com)

1921 E. Main Street • Visalia, CA 93292

Mon.-Fri. 9am-5pm

*Contributing to your success,  
one impression at a time!*



## FOR SALE

Saddle made by Al Gould.

Southwestern tooling. 15" seat,  
Breast collar included, used but  
in great condition. Email me for  
any questions or pictures,  
[linda.fitzgeraldcbs@gmail.com](mailto:linda.fitzgeraldcbs@gmail.com).

**Asking 2,150.00.**

Call (559) 289-8322



[www.bchcsjsu.org](http://www.bchcsjsu.org)

Make sure you check out our website for updates on the Home page, Calendar page, and Newsletters. We also have a Photos page of our latest activities.

If you have any photos send them to Duane at [wpeverill@sebastiancorp.net](mailto:wpeverill@sebastiancorp.net)

[www.bchcsjsu.org](http://www.bchcsjsu.org)

## Advertising Rates

### Classified Ads

\$.10/word with a 20 word minimum (\$2.00),  
\$.50 a line after that.

### Display Ad Rate per issue

Business Card Size, \$8.00,	1/2 page, \$35.00,
1/4 page, \$20.00,	Full Page, \$50.00

Prices are subject to change without notice. All prices are for one month, due the 10th of the month. Editor reserves the right to refuse inappropriate ads.

*All paid Ads include an E-mail Blast to all members with current emails*

## Attention

Your SJS Unit Board of Directors would like to invite any of our members to attend the monthly Board meetings or General meetings. It is important all directors have the same opportunity to hear the information, concerns or suggestions you wish to share. We are volunteers doing our best to keep our Unit informed and working smoothly. Refer to the newsletter for the information regarding times and location of upcoming meetings.

Respectfully,  
Joe Kaminski



Your Full Service Realtor  
**Jessica Gabrielson**  
Realtor, GRI, SRES, SFR, ASP  
DRE#01338726

559.905.7724  
Office 559.321.6040  
Fax 559.321.6044  
[jgabrielson@guarantee.com](mailto:jgabrielson@guarantee.com)

180 W. Bullard Ave.  
Clovis, CA 93612



**"I don't horse around when it comes to selling your porperty"**

## "Travel Advantage"

Dear BCHC Members

Check out the latest edition of "Travel Advantage", @ [www.ytbtravel.com/bchc](http://www.ytbtravel.com/bchc) a travel newsletter full of terrific deals from YTB, our BCHC travel partner. The newsletter is chock full of great ideas for anyone's next getaway! You can download an icon to your computer desktop for instant connection to the BCHC Getaway website.

Please forward "Travel Advantage" newsletter to your friends and family and other BCHC supporters. The more we get the word out, the more people will use the BCHC Getaway travel site to take advantage of great rates on hotels, flights, rental cars and other travel-related items, the more BCHC will earn for our Treasury!!

Please do not hesitate to contact me if you have any questions about the travel site, how it works or what BCHC earns by participating in this great opportunity. Thank you for supporting and promoting BCHC Getaway!!

C.J. Hargreaves  
BCHC Editor/Travel Site Coordinator  
[cjohargreaves@verizon.net](mailto:cjohargreaves@verizon.net)

# **BCHCALIFORNIA STATE BOARD MEETING**

## **OCTOBER 12, 2019**

By Ruth Cramer

Here are the highlights of the State Board Meeting in Santa Nella, Ca., that Muriel Holland and I attended on October 12. There was quite a bit of information presented, which I will cover in the future newsletters. Four major types of business were conducted: (1) the general business of running a statewide organization, including annual elections; (2) updating policies and by-laws to stay in step with state and federal laws; (3) a strategic plan for addressing declining membership and revenues and ways to recruit and maintain new members, and (4) education and training. By January 2020, the state website will be updated with the new policies and procedures, forms, and strategic plan documents so that every unit can participate.

What stands out from the meeting is the downward trend in membership. Chip Herzig presented the different approaches for recruiting, mentoring and integrating new members into a unit's programs and local activities. Some ideas include:

Consider a group membership category to bring in horse groups  
Offer new members simple approaches to getting started in wilderness packing  
A personal approach, like mentor programs.

Our unit is in the vanguard of providing the last two opportunities. In fact, President Joe Kaminski was singled out for his work mentoring new volunteers on our trail projects.

Another item that prompted much discussion was the Youth Program Policy and the California/DOJ requirements for background checks for members. BCHC plans to "develop local and statewide relationships with youth organizations which will introduce youth to our units' work, to the essential skills needed, and to the use and care of horses and pack stock". This will require that we are in compliance with California law regarding background checks and fingerprinting for adults who lead youth activities. New policies and changes to the by-laws were adopted, which will be implemented by the Youth Chairperson.

Under education and training, there is a new Officer's Training Manual for 2020. Officers are encouraged to RSVP for the training to be held January 25, 2020 (details to follow). New members are encouraged to attend as well; this is a great way to learn about all the opportunities there are to support our work. Next time, the Strategic Plan.



## **2018 OFFICERS/DIRECTORS**

### **President**

Joe Kaminski, 559.909 0505  
kaminskiclan@gmail.com

### **Vice President**

Ruth Cramer, 559 417 3878  
racramer@outlook.com

### **Secretary**

Carol Kaminski, 559-733-9170  
kaminskiclan@gmail.com

### **Treasurer**

Gary Van Sickle, 559-288-0301  
gwvansickle@outlook.com

### **DIRECTORS**

Term Expires at end of year:

Muriel Holland, 559 855 4149  
muriel@netptc.net  
2020

Jim Knabke, 559-299-3254  
jjknabke@comcast.net  
2020

Susan Van Sickle 559-779-4105  
gwvansickle@gmail.com  
2020

Debbie McDougald, 559 905 268  
ladypacker@netptc.net  
2019

Steve Naylon, 559 284-7478  
scnaylom@hotmail.com  
2019

Jim Laber, 559-250-7906  
jimlaber218@gmail.com  
2019

Paige Stambach, 559-909-3930  
paigestambach@gmail.com  
2021

Rick Peeren, 559-908-0608  
rick.peeren@sbcglobal.net  
2021

### **COORDINATORS**

#### **Membership/Mailing Coordinator**

Jan Mikkelson, 559-289-4911  
jessecowboy@comcast.net

#### **Public Lands Liaison**

Joe Kaminski, 559-733-9170  
kaminskiclan@gmail.com

#### **Newsletter Editor**

Jim Laber, 559-250-7906  
jim@visaliaidea.com

#### **Education Coordinator**

Muriel Holland, 559-855-4149  
muriel@netptc.net

#### **Sunshine**

Pat Peverill, 559-824-1119  
ppeverill@sebastiancorp.net

#### **Shaver Lake Camp Host**

Ruth Cramer, 559-417-3878  
racramer@outlook.com

### **Web Wrangler**

Duane Peverill, 559-908-3138  
wpeverill@sebastiancorp.net

### **Facebook**

Paige Stambach, 559-909-3930  
paigestambach@gmail.com

### **Big Meadows Horse Camp**

Jim Knabke, 559-299-3254  
jjknabke@comcast.net

### **ADVISORS**

#### **Past President**

William Duane Peverill  
559-908-3138  
wpeverill@sebastiancorp.net

## ANOTHER WAY TO GET A CROWN

Well call us crazy but we just had to plan one last trip for the year and Crown Lake was the winning destination with good weather in the forecast. With most of the back country but especially Crown Lake I can't help but imagine that the Lord rested in the Sierras on the 7th day while he considered and enjoyed the creation of his hand.



We went another way this time as we mapped a route although more in elevation (10400), it was shorter in mileage. We overnighted Wednesday Oct 2 at the Rancheria trailhead and got an early start The morning of the 3rd . We were packed up and off by 8am and headed out for our first trail change up to Lacy Camp and Crown Pass. This was the same route so far, we had taken last year with Joe and Ted but we would not be turning at Lacey camp toward Chuck Pass (not going that way again voluntarily) but instead we continued on toward Moore Boys Camp. The trail had been recently been cleared of a number of large trees with work on the trail with new water bars and culvert cuts. Very clean all the way with no work arounds and very scenic. At Moore Boys Camp we took the trail toward Chimney Lake, Woodchuck Lake, and Crown Pass. Again, smooth sailing and beautiful weather. Just a note on the camps mentioned. Other than a few rock mounds at Lacey camp there is nothing camp like as viewed from the trail at Lacey or Moore Boys Camp.



It had finally warmed enough to shed the jacket although at around 9000 in elevation we were getting glimpses of the cold snap and reported upper elevation snow from a week prior, that was still hanging out on the north side of most anything able to cast an all-day shadow. As we continued to Crown Pass, we proceeded past the trail breaks for Chimney Lake and Woodchuck lake. The forest is very open at this point and is turning mostly to granite and meadows. Besides a variety of birds, we saw a number of deer hiding out I'm sure from the many hunters we saw at the trailhead unwilling to make the long trip. As we came closer to Crown Pass the trail became harder to discern but a trail duck here and trail duck there we kept on our way until.....the ducks had us going in a circle. Comedians even at 10400 in elevation. You have to just smile and bear with it. As we got out the GPS and tried to find the real trail, we found ourselves on an edge to a very beautiful sight. Crown lake was below (about a 600 foot drop) in all her glory. From this point we dismounted and led our horses down through the rocks and finally hit upon the trail. Although the GPS said we were on or near Crown Pass we never picked up the trail marker for the pass and Half Moon Lake above. We got to the lake and made camp cared for the stock and settled in for the very cold night. We woke to a very clear but cold morning. The lake had a one-foot ice ledge all the way around it with a lap ring that looked like a clear hose. After coffee and butter fried bananas for breakfast (yea Doug kind of left our trip breakfast back at the trailer and we wanted something warm). Not bad on a cold morning but we agreed to get more creative.



Well with that hardy breakfast fueling us we took the stock out to water and graze and get a view of the activity going on in the lake. We agreed the cold snap may have put the trout to sleep early as there was not hardly a ripple on the lake. After getting the stock put up and grabbing the fishing gear we headed down to see if we could snag an old friend. Well Doug didn't waste any time and landed a 16 inch Brown right off. I watched jealously as he hauled in the next one. Not to be out done I tried about every thing I had in the tackle box and finally landed my first a Rainbow. Unlike last year this all took time and it was near noon before we had 6 nice fish for the coming days. We cleaned the fish and then used a recipe we came up with off the cuff to fry the trout in which is this months featured backcountry recipe in this newsletter. Yes Fresh fish tacos at altitude are delicious and we enjoyed with



plenty left for lunch the next day.

Friday night was definitely warmer and Saturday morning there was but a very slight frost around the lake and a few ducks making noise while swimming in the Crown. We made coffee breakfast and took care of the stock and enjoyed the warming climate afforded us. Just when we think we are the only ones ever enjoying this precious jewel, we hear barking on the other side of the lake. It's a dog which for the longest time we cannot see barking like its lost or distressed. We call out to it but it keeps yapping and yapping. Finally, I catch site of a very small dog jetting off on the trail out to crown valley and never hear it again. Not sure where it came from but there were many a boot print on the trail the next day as we made our way out on the trail down to crown Valley and the trail head. We spent the rest of Saturday riding around the lake, terrain, and meadows around it. There is so much to do and see around this lake, although at the end of the season we are probably enjoying much more an ease of access to it all than earlier in the season. Although we took plenty of grain and pellets with us the grazing even late in the season was good. Sunday, we tacked and packed them all up early and headed out toward Crown Valley. Although we just last year did a work project on this trail it is worse from Elizabeth Lake down to Crown Valley than it was before. We are sure the good winter we had took its toll on the stressed and dying trees in that area.

We are in awe of this area and the beauty we are able to enjoy. We are also reminded with that blessing comes a responsibility to do more. And thus our membership and activity with our unit in its quest to keep trails open for all, say bring it on. Hope to see you soon in the saddle on top.





# BCHCSJSU SHIRTS

On the trails we work and ride we share the trail with others, that at times have trouble seeing us because of shadows and various modes of transportation used, especially in non wilderness designated areas.

For that reason your unit board of directors has made this shirt available for safety on trail rides and work parties as well as a way to promote our unit and its activities.

## Order you BCHCSJSU Trail Work/ Riding Shirt

Make checks payable to BCHCSJSU  
and send to:

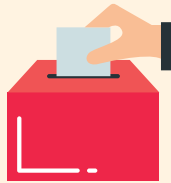
Attn: Gary Van Sickle  
BCHCSJSU  
P.O. Box 25693  
Fresno, CA 93729-5693



To order call Gary Van Sickle with size and quantity.

Qty: \_\_\_\_\_ X \$14.65 each \_\_\_\_\_

## Backcountry Horsemen of California San Joaquin Sierra Unit Oct. 16, 2019 Election Results



### President

Joe Kaminski

### Vice President

Ruth Cramer

### Treasurer

Gary Van Sickle

### Secretary

Carol Kaminski

### New Directors

Doug Laber

Steve Naylor

Jim Laber

Paige Stambach

### Director Terms Up In 2020

Debbie McDougald

Rick Pereen

Sue VanSickle

Murial Holland

## Ted Fischer Memorial DAVE STAMEY CONCERT

Tickets on  
Sale Now!  
\$30

Jan. 18th, 2020

Doors Open 6:45  
Concert Starts 7:30

Clovis Elks Lodge

Contact:

William Duane Peverill

by phone or email

559 908-3138

wpeverill@sebastiancorp.net



## MONTANA DE ORO

On Columbus Day weekend the Coastal Mounted Assistance puts on a ride at Montana de Oro. This ride includes 5 days and four nights of camping, pot luck on Saturday night and a great catered lunch and raffle on Sunday afternoon. Normally on Saturday there is an obstacle course set up which is great fun to try new skills. Unfortunately this year it was canceled due to unforeseen circumstances but hopefully it will return next year. What a great time meeting new friends and connecting with some old friends. There were evenings around the campfire and plenty of riding time.

Once again this year we were blessed with perfect weather, sunny mild temperatures and a soft breeze. The hospitality and friendliness of our hosts makes the weekend a perfect event. Although this is not a BCHC event there are many BCHC members there from different units and a great time was had by all. The event was attended by five members from our unit. For us personally it was nice to not be in charge of anything in such a relaxing atmosphere. The Coastal Mounted unit is always appreciative of our support. This was a fun way to be involved in their fund raiser. What a great way to end a busy season.





**San Joaquin-Sierra Backcountry  
Horsemen**



**HO..Ho..HO (not WHOA!)**

It's that **Time of Year** to gather for our annual **Christmas** Holiday party. You **DON'T** need to be a member to come and join in the festivities.

**Saturday, December 14, 2019**

Cost: \$25.00  
Time: 5:00 p.m. Social Hour  
Dinner: 6:30 p.m.  
Location: Clovis Elks Lodge  
535 Woodworth Ave  
Clovis



We will have  
Music By  
John Pemerton  
entertaining us  
YeeHAW!



No Host Bar  
Silent Auction  
And...As Always  
**Yummy Food**  
Tri Tip or Chicken

Please R.S.V.P. by December 1, 2018 to:  
Jim or Debbie Dixon 559-  
779-3507

or email to: [jddixon@netptc.net](mailto:jddixon@netptc.net)



\*\*\*Auction Donations? Bring any new item to the party and we'll put 'em on the table!\*\*\*

Prepay and get it out of the way! Tear off and mail **BELOW!**



***Back country Horsemen Christmas Dinner December 14th, 2019***

Name \_\_\_\_\_ Number of Attendees \_\_\_\_\_

Chicken Dinners# \_\_\_\_\_ Tri Tip Dinners # \_\_\_\_\_ Paid amt. \_\_\_\_\_

Mail to: Jim & Debbie Dixon P.O. Box 319 Shaver Lake, CA  
93664

## TROUT MEADOW

Fall is a great time to visit the southern sierras. My son Josh and his friend Brandon Thompson ventured with me to the area north of trout meadows. I had only been in this area once and memory not what it used to be. After crossing the little Kern river, I decided to take a short (ha ha) cut that would prove to take a couple of hours longer to our camp. Not realizing fires had been through this area, we encountered down tree after down tree. Many times we would have to leave trail around obstacles then try to find the now non-existent trail.

Finally connecting to the main trail, we were elated to find a great camp spot. Animals were unloaded and fed camp set up then we settled in to dinner by a nice fire. That night after settling the stock, a cool night provided good slumber.

As morning broke the boys set out to check for sign of deer. The stock were set out to graze and water. Upon return from their hunt breakfast along with some strong coffee was enjoyed around a nice fire. This would be the routine for the next few days.

All good things come to an end and it was time to close this chapter. What a fantastic time to reconnect, take in beautiful vistas, enjoy good food, and get to put our stock to use. Oh by the way, going out we did not take the short cut and made it out in two hours less than what it took to go in. How blessed we are to have such beautiful places at our disposal.

by Joe Kaminski





**Backcountry Horsemen  
of California**



**MAIL TO: BCHC  
MEMBERSHIP  
1280 State Rt. 208  
Yerington NV 89447**

**MEMBERSHIP  
APPLICATION**

**PARENT UNIT AFFILIATION: (Select and CHECK a Unit as your Affiliation)**

<input type="checkbox"/> New	<input type="checkbox"/> Renewal	<input type="checkbox"/> Antelope Valley	<input type="checkbox"/> Kern Sierra	<input type="checkbox"/> North Bay	<input type="checkbox"/> Santa Ana River
<input type="checkbox"/> Change		<input type="checkbox"/> Eastern Sierra	<input type="checkbox"/> Lake-Mendo	<input type="checkbox"/> Pacific Crest	<input type="checkbox"/> Sequoia
<hr style="width: 100%;"/>		<input type="checkbox"/> High Country	<input type="checkbox"/> Los Padres	<input type="checkbox"/> Redshank Riders	<input type="checkbox"/> Shasta Trinity
<i>(indicate change)</i>		<input type="checkbox"/> High Sierra	<input type="checkbox"/> Mid Valley	<input type="checkbox"/> Redwood	<input type="checkbox"/> Sierra Freepackers
		<input type="checkbox"/> Kern River Valley	<input type="checkbox"/> Mother Lode	<input type="checkbox"/> San Diego	<input type="checkbox"/> Sutter Buttes
				<input type="checkbox"/> San Joaquin Sierra	<input type="checkbox"/> Top of the State

DCTR (your Membership

MEMBER'S NAME – No Business Names, Print Clearly    SPOUSE/Co-MEMBER'S NAME – MUST SHARE SAME ADDRESS

Street Address/PO Box

City \_\_\_\_\_ State \_\_\_\_\_ Zip Code (full 9 digits if known) \_\_\_\_\_ Area Code \_\_\_\_\_ Phone number \_\_\_\_\_

Email Address: \_\_\_\_\_ (please print legibly)

Donation to BCHC Education Fund (tax deductible) \$ \_\_\_\_\_

Total Enclosed: \$ \_\_\_\_\_ Check No. \_\_\_\_\_

**Parent Unit Membership Types (Check one)**

- Individual \$50     Family \$60     2 Year Individual \$90     2 Year Family \$110     3 Year Individual \$125     3 Year Family \$150

Young Adult (18-25 years old) \$15 – Benefactor \$100 – Patron \$250 – Mt. Whitney \$500

Associate Memberships: An Additional \$15 PER UNIT is added to your Parent Unit Dues

**Associate Memberships Unit Affiliations MAY NOT BE FOR THE SAME UNIT AS YOUR PARENT UNIT**

Associate Membership for: \_\_\_\_\_ \$15.00/Unit  
Unit Name (from above list)

Associate Membership for: \_\_\_\_\_ \$15.00/Unit  
Unit Name (from above list)

\_\_\_\_\_  
Add additional choices here

**Please clip form along dashed line and keep the below portion for your records**

**Parent BCHC Membership Types**

Individual, Family, (Shared\*), Benefactor, Patron, and Mt. Whitney

A Parent Membership is affiliated with a single Local Unit. BCHC members may NOT hold more than ONE active Parent Membership.

\*A SHARED Membership is for two adults with differing last names who share a common address.

**ASSOCIATE MEMBERSHIPS**

These special Memberships are only available to persons already holding Parent BCHC Membership. No one may sign up for an Associate Membership without 1) having registered one of the Parent Membership types, and 2) having selected Parent Unit affiliation.

**Complete information regarding BCHC Membership is available on the MEMBERSHIP TAB at [bchcalifornia.org](http://bchcalifornia.org) or call (775) 463-3634**

**KEEP FOR YOUR RECORDS**

I submitted an Application Form for a new -

- |                                                        |                 |
|--------------------------------------------------------|-----------------|
| <input type="checkbox"/> Individual Membership         | <b>\$ 50.00</b> |
| <input type="checkbox"/> Family (Shared) Membership    | <b>\$ 60.00</b> |
| <input type="checkbox"/> Young Adult (18-25 years old) | <b>\$ 15.00</b> |
| <input type="checkbox"/> 2 Year Individual             | <b>\$ 90.00</b> |
| <input type="checkbox"/> 2 Year Family                 | <b>\$110.00</b> |
| <input type="checkbox"/> 3 Year Individual             | <b>\$125.00</b> |
| <input type="checkbox"/> 3 Year Family                 | <b>\$150.00</b> |
| <input type="checkbox"/> Benefactor Membership         | <b>\$100.00</b> |
| <input type="checkbox"/> Patron Membership             | <b>\$250.00</b> |
| <input type="checkbox"/> Mt. Whitney Membership        | <b>\$500.00</b> |

On that form, I also requested:  
 \_\_\_\_\_ Associate Memberships \$ \_\_\_\_\_  
 My Total Remittance: \$ \_\_\_\_\_  
 My Check Number: \_\_\_\_\_  
 Date Mailed: \_\_\_\_\_

**Verification of**

**BCHC**

**membership** is available via (1) BCHC unit president's reports (2) BCHC membership chair reports (3) a self- addressed stamped envelope submitted with this form or (4) a valid email address

# Choosing A Horse Trailer From The Horse's Point Of View

## WHY A ONE HORSE TRAILER? YOU ARE PROBABLY ASKING YOURSELF...

Whether you are looking to buy a new horse trailer or a used one, it's easy to be influenced by fancy options and shiny construction materials. But, for a horse owner who wants to promote safe and stress free hauling for the horse, choosing a trailer from the horse's point of view is very important. Since many horse trailers are built to appeal to the human perspective, this may not be as easy as one may think.



Considering the nature of the horse as a species, it's a minor miracle that our equine friends get into a trailer at all. Horses are creatures of the prairie who are designed for life in wide open spaces. Because they are prey animals, they have a highly developed "flight or fight" response. When danger threatens, horses run away. That is how they survive. Feral horses who don't run fast enough end up as dinner! They also have to watch their footing so they don't fall into a hole or quicksand!

Whenever we deal with a horse, we have to consider this flight response and reluctance to step on suspicious ground in our training. Because a horse trailer is small, dark, and shaky, it goes against the horses' very nature, but because horses are also trainable, they learn to put their natural fears aside and do the crazy things we ask them to do.

However, even if they do what we ask, it may not be comfortable for them, and they can suffer stress in ways that we don't even notice. It's easy to notice when the horse won't load, but it's less obvious that illness and some injuries can be caused by design features in a trailer that make trailering more stressful for the horse. Some trailering problems have become so commonplace that people just accept them as part of the process. Things like breaking halters and loading and unloading problems are some of those "acceptable" incidents that don't need to happen. Other problems like shipping fever, dehydration, colic, and even the acute stress of injury can be prevented by a stress free trailering environment.

Stress can be defined as an external stimulus which is beyond the control of the animal. When a horse is exposed to stress, the autonomic nervous system kicks in to physically prepare the animal to react to the stress. Heart rate elevates, adrenaline and epinephrine are secreted, and other bodily functions such as hormone levels, change to help the animal survive. For the horse, the reaction is to run away to avoid the object of the stress and the system returns to normal, so therefore, this system works in the horse's natural environment. However, if the horse cannot escape the object of stress over a long period of time, the health of the horse begins to suffer. The chronic stress can have a negative impact by changing the immune functions that can predispose the animal to disease.

Putting a horse in a trailer goes against it's very instinct. He cannot get away from the stress of this small enclosed box. He is also put at risk of injury from the trailer itself or the possibility of a traffic accident. Whether your horse is a pet, or you only think of your horse as an investment or a tool, avoiding illness and injury can save you money and heartbreak, and at the very least, can actually improve his performance.

Of course, horses travel all the time without incident, and trailering can be a safe and enjoyable experience. **Buying the safest horse trailer** will increase your chances of arriving at your destination with a healthy, happy horse.

Manufacturers must build horse trailers to conform to the requirements of the road, but because there are no industry or government regulations concerning the safety of the horse, there are wide differences in horse trailers. Look at your prospective trailer from the horse's point of view.

What does the horse want? Room and light, good ventilation, and safety in design.

**Room and light:** An average sized horse ( 15.1h - 16.3h) needs about 10 feet of usable length to be comfortable. A larger horse may even need more. A horse needs to be able to spread his legs for steadiness, but is also important that he be able to use his head and neck freely for balance. A light colored interior and lots of windows or slats will make the trailer much more inviting and less claustrophobic.

**Good ventilation** is important for the horse's respiratory health and to control the temperature and environment of the trailer. Hay dust and noxious gasses from manure and urine compromises the horse's respiratory system and predisposes him to diseases such a shipping fever. Roof vents will remove contaminated and/or hot air from the trailer. A light colored exterior, especially the roof, will make the trailer cooler in hot weather.

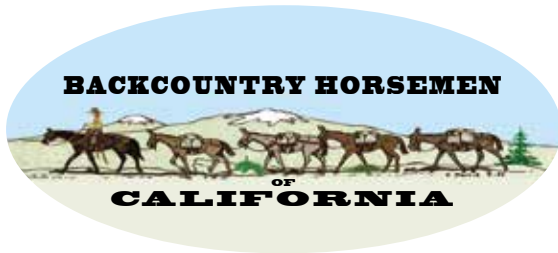
**Safety in design:** There should be nothing sticking out to harm the horse in anyway. Tie rings, and latches should fold flat against the wall. All center posts and dividers should quick release, but should be strong enough to not break apart until you can make the decision. (Exception - dividers should come up and out if a horse would get under it.) No sharp edges anywhere. All parts of the trailer should be strong enough to hold up to the largest, strongest horse who will be hauled in it.

Ramps should be low to the ground and not slippery. It should be possible to reach every horse individually in the event of an emergency. (This is a special problem with many slant load trailers.) Butt and chest bars should quick release.

Safety in design also includes road safety. All brakes and lights should be in perfect working order and the emergency breakaway brake battery should be charged. Safety chains on tag-along trailers must be crossed underneath, and ball hitch gooseneck hitches should also have safety chains or cables. Tires should be inflated to the recommended capacity, and rubber torsion suspension will not only reduce road shock for the horse, but will be an added safety feature if the event of a flat tire. It is most important that a tag-along trailer be hitched to a frame mounted Class III or Class IV hitch, and that the trailer be towed in a level position. Whether you are towing a gooseneck or a tag-along trailer, you must have a properly rated tow vehicle to insure your own safety.

---

**THIS HORSE TRAILER SAFETY ARTICLE IS PROVIDED BY EQUISPIRIT HORSE TRAILERS.**



*San Joaquin Sierra Unit*

P.O. Box 25693  
Fresno, CA 93729-5693

## **Objectives & Purpose of the Backcountry Horseman of California**

*From the BCHC Bylaws*

- To improve and promote the use, care and development of California backcountry trails, campsites, streams and meadows; to advocate good trail manners.
- To promote the conservation and utilization of our backcountry resources in concert with livestock transportation.
- To keep the backcountry trails and forage areas open to horseman on all public lands.
- To keep current information before the Corporation membership and its local Units regarding new legis-lation or management plans related to government regulations of the backcountry.
- To support or oppose new proposals, plans and restrictions as related to the interest of horsemen and those persons interested in recreational stock use and enjoying the backcountry.
- To promote the interest of people who, due to health or physical factors, need transportation other than by foot on backcountry trails.
- To promote public awareness and interest in the historical aspect of horsemen and stock in the back-country and to help educate backcountry users on the ways to use the trail and foraged in a manner that conserves the backcountry resources.
- To assist in keeping the public informed of the vital need for a clean backcountry.
- To promote a working relationship with and keep the work and interests of the Corporation before our local, state and federal officials.
- To assist in the formation and continuation of local Units to carry out these purposes.