

# SAN JOAQUIN SIERRA

## Hoof Prints

June 2018

Issue 4

**San Joaquin Sierra Unit, BCHC**  
**PO Box 25693**  
**Fresno, CA 93729-5693**

**Email:** [membership@bchcalifornia.org](mailto:membership@bchcalifornia.org) (membership email only)  
**On the WEB:** [www.bchcsjsu.org](http://www.bchcsjsu.org) (SJS Unit) or  
[www.bchcalifornia.org](http://www.bchcalifornia.org) (State)

**BACKCOUNTRY HORSEMEN**



**OF CALIFORNIA**

**Concerned Men and Women Dedicated to Gentle Use of California Trails and Backcountry**

## Presidents Message



The weather is warming up and it is time to get out and ride. We are in the process of opening up our members only Shaver Lake Equine Camp and I will send out an email blast when it is ready.

Big Meadows Horse Camp is now open and ready for everyone to enjoy. We have a Camp Host on duty to help keep the camp clean and assist equine campers. Some changes have been made at the camp and I will email all of you with the camp procedures and post them on our web page. Ted Fischer did an outstanding job at our general meeting with a presentation on Chainsaw Safety and How to Get Certified. Ted is hoping to put on a Chainsaw Class for our unit. We always try to have a guest speaker at our general meetings. If you know of someone that would be a great speaker please let me know. I would also like to thank Carolyn Witt for all the years that she spent doing the newsletter. Carolyn did an outstanding job and received several awards

for her newsletter. Jim Laber has now taken over the newsletter. It will be published every month. Please send him articles. The due date for articles is the 20th of every month. **HEADS UP**.....We have scheduled Dave Stamey for a Desert Concert on January 12, 2019. Last year the concert sold out. Will let you know when tickets go on sale. Please contact me with any concerns you might have and also about any activities you would like to see the club sponsor. Remember....this is your club.

**Get Involved!!!!**

Please check out the web site [bchcsjsu.org](http://bchcsjsu.org) for all updates on the unit and activities. We have a calendar that lets you know about the upcoming activities. Hope to see you on the trail. Remember, He who procrastinates is a murder of time-SADDLE UP!

William Duane Peverill  
President, BCHCSJSU

# 2018 Calendar

Board Meetings are on the 1st Wednesday of the month. All members are welcome to attend. Board meetings start at 6:30 pm at the Clovis Elks Lodge, 535 Woodworth Ave. (Bullard & Woodworth).

Calendar & Ride schedule is on-going, and new events and rides will be published when confirmed.

Note: Dates and events are subject to change or cancellation; calling the contact person is recommended or checking [www.bchcsjsu.org](http://www.bchcsjsu.org)

- April 4 Board Meeting, Clovis Elks Lodge 6:30 p.m.
- April 7 Desensitizing Clinic, John and Jan Mikkelson, 559-289-4911, [jessecowboy@comcast.net](mailto:jessecowboy@comcast.net)
- April 13-15 Redezvous in Paso Robles, Los Padres Unit, Shirley Rasmussen [shirleyjras@gmail.com](mailto:shirleyjras@gmail.com)

2018 BCHC RENDEZVOUS April 13-15, 2018 A big thanks to the Los Padres Unit for stepping up! Event will be at *Paso Robles Event Center Hearst Equestrian Center Paso Robles*, California Volunteers will be needed. Please contact Shirley Rasmussen [shirleyjras@gmail.com](mailto:shirleyjras@gmail.com) MARK YOUR CALENDARS AND PLAN TO ATTEND!

- April 14-15 Cross Cut Saw Class (State Class) Porterville
- April 21-22 Chain Saw Class (State Class) Porterville
- April 28 Clovis Parade, John and Jan Mikkelson, 559-289-1911, [jsscscowboy@comcast.net](mailto:jsscscowboy@comcast.net)
- April 27-30 Clovis Rodeo
- May 2 Board Meeting, Clovis Elks Lodge 6:30 p.m.
- May 4-6 Jose Basin Camp out, Joe and Carol Kaminski, 559-733-9170 [kaminskiclan@gmail.com](mailto:kaminskiclan@gmail.com)
- May 22-24 Big Meadows Horse Camp Work Party, Joe and Carol Kaminski. 559-733-9170 [kaminskiclan@gmail.com](mailto:kaminskiclan@gmail.com)
- June 6 Board Meeting, Clovis Elks Lodge 6:30 p.m.
- June 15-22 Edison Work Party, Joe Kaminski 559-733-9170 [kaminskiclan@gmail.com](mailto:kaminskiclan@gmail.com)
- June 16,17 Buck saw Clinic, Joe/Carol 559-909-0505
- June 25-July2 Edison Work Party, Joe Kaminski 559 733-9170
- July 11 Board Meeting, Clovis Elks Lodge 6:30 p.m.
- July 6-8 Montana De Oro Ride, Peter Parkin, 559-871-4500. [Ktzpaw@yahoo.com](mailto:Ktzpaw@yahoo.com)
- July 16-23 Crown Valley Work Party Contact Joe/Carol 559-909--5-5
- August 1 Board Meeting, Clovis Elks Lodge 6:30 p.m.
- August TBA Tamarack Campout/Ride
- August 10-12 Diana Sorensen Memorial Tamarack Camp Out/Ride Joe Kaminski 559 733-9170
- August 15 General Meeting, TBA
- September 5 Board Meeting, Clovis Elks Lodge 6:30 p.m.
- September TBA Tamarack Poker Ride
- October 1 Board Meeting, Clovis Elks Lodge 6:30 p.m.

## 2018 Calendar (continued)

October 4-8	CCMA Poker Ride/Campout at Montana De Oro, non-unit activity
October 6	Eagle Point Ride Shaver Lake, Cara Peterson
October TBA	Elections/General Meeting TBA
November 7	Board Meeting, Clovis Elks Lodge 6:30 p.m.
November TBA	Playday
December 5	Board Meeting, Clovis Elks Lodge 6:30 p.m.
December 8	Christmas Party, Clovis Elks Lodge

### 2019

Jan 12 Dave Stamey Concert Tickets Go On Sale (TBA) Contact Ted Fischer 559 855-8599

Is there any activity that you would like to sponsor? We are always looking to improve the club and making it fun for all members. Please submit your ideas, [wpeverill@sebastiancorp.net](mailto:wpeverill@sebastiancorp.net). You may call 559-908-3138 and I will get back to you.

William Duane Peverill  
President

Remember to check for any Unit updates at our Web Site:  
[www.bchcsjsu.org](http://www.bchcsjsu.org) for the San Joaquin/Sierra Unit,  
[www.bchcalifornia.org](http://www.bchcalifornia.org) for the State Web Site

*The purpose of this publication is to keep its members informed on important issues that affect all horsemen and to inform the membership on up-coming events within the unit. The views and opinions expressed in this newsletter are those of the editor & authors and not necessarily shared by BCHC.*

## Backcountry Cooks

### Mountain Man Breakfast 12" Camp Dutch Oven

2 pounds sausage  
2 pounds frozen hash brown potatoes  
8 eggs, beaten with 1/4 water  
2 cups cheese, grated

In a 12 inch Lodge camp oven over a full bed of hot coals, fry and crumble sausage. Remove cooked sausage and drain on paper towels. Using sausage drippings in the pan, brown potatoes and spread them evenly in bottom of camp oven. Place cooked sausage over potatoes. Pour eggs over sausage layer. Sprinkle top with cheese. Cook with 8 coals underneath and 16 on top for 20 to 25 minutes until eggs are cooked.



## BCHC Intern Winner



Congratulations to Kristianne Morrison for being selected to receive the BCHC Intern Scholarship. We are looking forward to her participation in our unit. Now and after her internship she will have a lot to offer our unit and BCHC. Kristianne is from Clovis, California. This the info she submitted to the committee.

My name is Kristianne Morrison and I am 23 years old.

I have been riding my whole life since I was little. I participated in FFA when I was in high school. Some of the programs I did were horse judging, and I also was on the natural resource team for two years and did timed packing competitions through that program. I have volunteered at horse facilities being able to learn new skills and work with many breeds of horses. I can ride English and western styles and tack. I have worked at a pack station for the past three seasons, and I absolutely enjoy it so much. I would love to have the opportunity expand my knowledge. We had at least 60 head of stock, between mules and horses. I have taken pack trips ranging from 7,000 ft to 10,000 ft elevation, and as long 12 hours in the saddle. I have experience taking care of the animals as well as the guests that I have taken along. I also have a huge love for native plants and animals and having a knowledge about the surrounding area that we pack into. I have a huge passion for the beautiful wilderness we have, and the traditional methods of enjoying the wilderness and keeping it thriving. Growing up my life has been based on camping, caring for our wilderness and horses, it is something that is a big part of me and I would be honored to be able to gain as many skills and knowledge from as many opportunities as I can. It has been always been a goal of mine to be able to work for the Forest Service.

## Pete Parkin Pipeline

It is that time of year. Time to go camping. Lets remember to get our fire permit and also follow safe fire rules. Go to our web page [bchcsjsu.org](http://bchcsjsu.org) and click on Fire Permit and take a short quiz and print out your permit. Easy to do and simple.

Here are some simple rules.

- Make sure you are at a site that allows campfires.
- Make sure there are no burn bans and it's not too windy.
- Dig a pit away from overhanging branches.
- Circle the pit with rocks.
- Clear a 10-foot area around the pit down to the dirt, removing anything that could catch on fire.
- Stack extra wood upwind and away from fire.
- After lighting, throw the match into the fire.
- Never leave a campfire unattended; an adult should supervise the campfire at all times.
- Keep a bucket of water and shovel nearby.
- Never put anything but wood into the fire.
- Do not pull sticks out of the fire.
- Do not sit on the fire ring or rocks around the campfire. They will heat up quickly and they'll stay hot for a long time.
- When it's time to put the fire out, dump lots of water on it, stir it with a shovel, then dump more water on it. Make sure it is COLD before leaving the campsite. If it's too hot to touch, it's too hot to leave!

Happy Trails.

An advertisement for IDEA! PRINTING & GRAPHICS INC. The ad features a blue and white background with a lightbulb icon in the bottom left corner. The text is as follows:

**IDEA!**  
PRINTING & GRAPHICS INC.

**(559) 733-4149**  
Fax: (559) 636-3690  
[orders@visaliaidea.com](mailto:orders@visaliaidea.com) • [www.visaliaidea.com](http://www.visaliaidea.com)  
1921 E. Main Street • Visalia, CA 93292  
Mon.-Fri. 9am-5pm

*Contributing to your success,  
one impression at a time!*

## Jesse calls in sick on Parade day!

T'was the day before parade time and all was going fine

Our horses were all prepped, looking beautiful, especially mine.

We left for the day, after rides and a bath,

But a tummy ache in Jesse, churned its painful wrath.

We rushed back to see him, and after a shot,

He was back on his feet, hungry, but not hot.

Not feeling so great, we decided it best,

To let him stay home, get better and rest.

The next day, I met the riders with flags in my hand,

Sadly sending them off, they all looked just grand..

All went so well, without a hitch, but I knew my horse Jesse, had planned to just 'ditch'.

Thanks to the parade riders Hanna Rousey, Peter Parkin, Ruth Cramer, Carol Kaminski, Ted Fischer, Tiffany Beechinoir, Flag bearers Sandy LaSpada, John Wagoner. Thank you so much, Bob Herrick, for coming during your busy schedule and showing off your string of mules and giving us the authentic "Backcountry Horsemen look".

This year we came in second in the parade. Great job guys!

Jan Mikkelson



# Starlight Ranch Ride

February 16-18, 2018



We had a good showing for the ride. Joe & Carol Kaminski, Pete Parkin, Jim Dixon, Doug Laber, and Jim Laber all showed up Friday the 16th of February and set about getting our stock on high lines, fed and watered. After familiarizing ourselves with our surroundings we tacked up, formed a posse and headed out the gate and then NE on the aqueduct road which travels over the twin aqueducts that convey water from the Owens Valley to Los Angeles. Our posse was out for an afternoon reconnaissance and search for Pete Parkin who had not yet arrived. Pete showed up about an hour out as we enjoyed a leisure ride with good weather. At that point we headed back to the ranch and helped Pete get settled in and set about with dinner, some great pie that Jim Dixon brought, and then a great fire to beat back the cold desert night with storytelling, great fellowship, and clear night sky stargazing in abundance.

Saturday morning, we were all up early taking care of the stock, and getting the coffee up and brewing.



We all enjoyed a hearty breakfast and set out to get ready for our first ride of the day. We were out the gate before 10am headed for Bean Canyon. Starting out the gate of the ranch in the lower desert elevations that we were at we are mostly seeing sage, creosote, yucca, a few Joshua trees, very dry patches of wild grasses, and a few cacti. Not much wildlife to see on the entire trip except the occasional lizard or mouse scurrying across the trail and a few quail, some rather large pigeons, and a couple of large ravens. As we gradually made our way to Bean Canyon and higher elevations the number of Joshua Trees increased quite a bit and we started seeing more juniper bushes which many were covered in blue juniper berries. We finally reached our midpoint a couple hours out and stopped to enjoy the sites, give the stock a rest and enjoy some lunch.



As we headed out of Bean Canyon, which at its head is close to PCT, we headed out through the canyon on another trail which took us through some interesting terrain including a few washes. We had great weather with clear skies and a light breeze and returned back in camp around 2:30 and found we were now in the company of some friends of the ranch that had come out to do some grounds maintenance. We all rested up and took a late one hour ride before dinner.

After the ride Doug and Jim set to getting the pulled pork ready and Carol added a great scratch cole slaw which we all sat down to enjoy together. After dinner we lit off another good fire, fueled with Joe and Carols contribution of orange wood which definitely kept us all warm. Seriously the ranch has a Paul Bunyon size wash basin fire pit you will see in the pictures that we may have over fed by a bit. we enjoyed great conversation and clear starlit skies that

we finished with some Dutch apple pie and birthday singing and good wishes.

Unfortunately the weather people were right on the wind, which started blowing Saturday night, built through the night, and we woke Sunday to clear blustery cold conditions. We cooked up a big breakfast which all enjoyed and broke camp to be gone before the predicted 30 mph winds from noon on and were out the gate and on our way home by 10am.

Although the desert can be a great winter riding destination there are weather variables including high winds, even higher than predicted, that can bring challenges for even the best prepared. We had two great days of riding though, and are very thankful for the owners of the ranch (Arlen & Mandy Van Tol), opening their ranch to us, and for all the memories for a weekend spent in great company on the trail, in the middle of the saddle and around the fire. Hope to see you all soon!



# Jose Basin Camp Out

May 2018

By: Cara Peterson

Horse camping at Jose Basin started Thursday afternoon with Jim Dixon first to arrive, followed by Ruth Cramer, Cara Peterson and Joe & Carol Kaminski. Katie Horst helped Joe bring in the double greens on wheels, then went home only to return the following afternoon with brownies, and also Fredi who brought smores. We had a wienie roast at the camp fire. Charred is best!



After some fence repair, the Kaminski clan got turned loose in the big pasture. Mama, TJ, High Five, Rose Bud and Frank. The young mules frolicked for hours. So much fun to watch. Stretch and Molly stayed home. On the other side of the pasture are 3 corrals which hosted, Luke, Heidi, Toby and Eli. Annie and Lagsi stayed home.

I have discovered my trailer works best for a kitchen set up, so I slept on a cot, under a large tarp that hung from the side of my trailer to the ground. I was safe from snakes because a rope, on the ground, circled my cot. Ruth had a tent and a cot. Jim used his trailer with a cot. Key word: COT. Jim also brought a propane heater. We used it to warm the breakfast plates!



Friday was a big day for riding. The Kaminski clan had a nice long training ride to themselves. They stayed in touch by using the club radios. The new antennas provided great reception. They saw deer and turkey. Jim, Ruth and I rode the Old Railroad Grade Road to Stevenson Creek. Ruth ponied Heidi. Jim rode his mule Tobias, and I rode Eli. They got to see a bear but I missed it. The grade is gradual but rocky. Scenic views all along the way, with glances of the Minarets. We rode over 5 miles to get to Stevenson Creek. We found a great lunch spot for us and our stock. The Creek was running with several good size fish and swim holes. Everyone enjoyed their ride, being thankful for the day and getting back safe.

Sherri Stout surprised us when she visited our camp with Sabin and Missy. She was trying out her new trailer, took a short ride alone, and then stayed for dinner.

Stories around the camp fire are always interesting. Jim Dixon had a couple rough flights while piloting an airplane, and not just turbulence. Joe was surprised when I chimed in as he was singing The Building Block song by Noel Paul Stookey. Carol talked about her grandkids that have a good time sneaking off, riding bikes and visiting neighbors. Sounds just like me when I was a kid. Ruth was a happy camper.





## **2018 OFFICERS/DIRECTORS**

### **President**

Duane Peverill, 559-908-3138  
wpeverill@sebastiancorp.net

### **Vice President**

Ted Fischer, 559-855-8599,  
tjfischer3@gmail.com

### **Secretary**

Carol Kaminski, 559-733-9170  
kaminskiclan@gmail.com

### **Treasurer**

Gary Van Sickle, 559-288-0301  
gwvansickle@gmail.com

## **DIRECTORS**

Term Expires at end of year:

Freddi Chrisman. 559-876-2416  
2018

Jim Knabke, 559-299-3254  
jjknabke@comcast.net  
2018

Susan Van Sickle 559-779-4105  
gwvansickle@gmail.com  
2018

Peter Parkin, 559-871-4500  
Ktzipaw@yahoo.com  
2019

Steve Naylor, 559-924-8173  
scnaylor@hotmail.com  
2019

Patricia Peverill, 559-824-1119  
ppeverill@sebastiancorp.net  
2019

Jim Laber, 559-250-7906  
jimlaber218@gmail.com  
2019

## **COORDINATORS**

### **Education Coordinator**

TBD

### **RAC**

Alan Fry, 559-294-0150,  
alanfry@mail.fresnostate.edu  
Ted Fischer, 559-855-8599  
tjfischer3@gmail.com

### **Facebook Coordinator**

Linda Knabke, 559-299-3254  
lknabke2@yahoo.com

### **Membership/Mailing Coordinator**

Jan Mikkelson, 559-289-4911  
jessecowboy@comcast.net

### **Public Lands Liaison**

Joe Kaminski, 559-733-9170  
kaminskiclan@gmail.com

### **Work Party Coordinator**

Joe Kaminski, 559-733-9170  
kaminskiclan@gmail.com

### **Newsletter Editor**

Carolyn Witt, 559-325-7876  
cawittbchc@hotmail.com

### **Printing of Newsletter**

Greg Caradonna

### **Sunshine Chair**

Pat Peverill, 559-824-1119  
ppeverill@sebastiancorp.net

### **Web Wrangler**

Duane Peverill, 559-908-3138  
wpeverill@sebastiancorp.net

### **Shaver Lake Camp Host**

Wanda Caradonna,  
559-392- 3534, wandacaradonna  
@sbcglobal.net

### **Volunteer Work Hour Report**

Wanda Caradonna,  
559-392- 3534,  
wandacaradonna @sbcglobal.net

### **Big Meadows Horse Camp**

Jim Knabke, 559-299-3254  
jjknabke@comcast.net

## **ADVISORS: Rick Pereen**

### **Past President**

Joe Kaminski, 559-733-9170  
kaminskiclan@gmail.com

## **SJS Unit Fund Raisers For Sale**

“There's a Mule Under My Saddle Cookbook” by Jean Brown of Idaho \$10.00

**Hats** \$15.00

*Khaki with a maroon or forest green bill are embroidered with one horse, two mules and says Backcountry Horsemen of California.*

**Scarf** \$13.00

*Scarves are a dark blue and are embroidered with one horse, two mules and says Backcountry Horsemen of California*

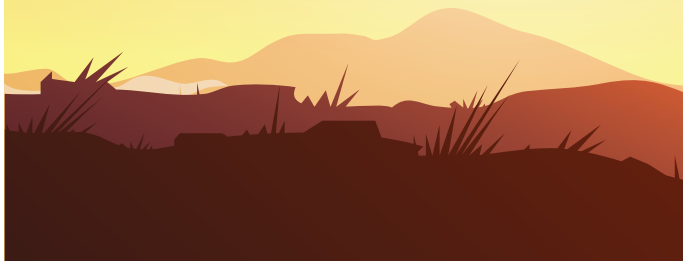
**Maroon Shirts** \$37.00 (Extra Tall \$40.00). The shirts must be prepaid before the order. The logo on the left is BCHC with San Joaquin Sierra Unit under the BCHC. Names added for \$5.00 in a group.

**Horse First Aid.....**great, informative quick reference \$25.00

Contact: Pete Parkin 559-871-4500 ktzipaw@yahoo.com &/or look for items at our rides and meetings.

# SUNSHINE CORNER

Wishing Alan Fry  
a speedy recovery  
from his Knee surgery



## The Lighter Side

Front Seat A policeman in the big city stops a man in a car with a miniature horse in the front seat. "What are you doing with that horse?" He exclaimed, "You should take it to the farm." The following week, the same policeman sees the same man with the horse again in the front seat, with both of them wearing sunglasses. The policeman pulls him over. "I thought you were going to take that horse to the farm!" The man replied, "I did. We had such a good time we are going to the beach this weekend!"

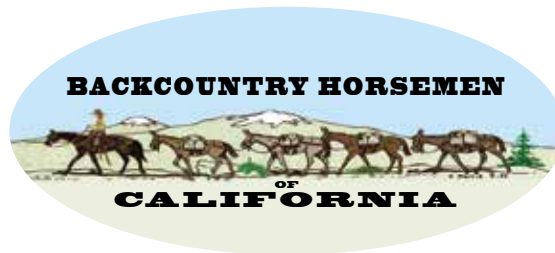
## Work Parties

We are very excited about the opportunity for the work parties coming up. Thanks to Debbie McDougald for securing grant money for the trips. This is huge as we have not had grant money for the past two years.

The first work party dates are for Edison and will be from Monday June 26 to Monday July 2. We will be staying at Cunningham pack station and riding to job locations each day and back to camp. The second work party is for crown valley and will be from Monday July 16 to Monday July 23. We will leave the rancheria trail head on Monday July 23 and camping in the wilderness. If we are packing your gear there is a 30# weight limit.

We will provide food for both work parties.

Please contact Joe or Carol Kaminski to confirm your spot at 559-909-0505.



*San Joaquin Sierra Unit*

## **BIG MEADOWS HORSE CAMP**

### **Open and Still Free Horse Camping**

Open 2018 courtesy of Backcountry Horsemen of California – San Joaquin Sierra Unit

#### **BACKGROUND**

Big Meadows Horse camp is located in the Sequoia National Forest at about the 7000 foot elevation. The camp is exclusively for horse camping. There are about 16 pipe corrals with campsites with fire rings. This camp has been open to the horse-public for many years on a no reservation, no fee basis. However, the US Forest Service (USFS) was scheduled to have a vendor take over this site and have it run as a fee, reservation only horse campground in 2016. Because of the long association of Backcountry Horsemen of California (BCHC) with this site, the USFS agreed to let BCHC run the site. Our club is volunteering to operate the campsite (there will be a camp host). The camp will be run pretty much as it always has – no fees, first come – first serve.

#### **KEEPING THE BIG MEADOWS HORSE CAMP OPEN**

If you are a horseman and like to ride in the Sierras and have not been to this camp, this is a great venue. If you are a veteran of the camp and have enjoyed staying, you can keep enjoying the camp. Our club unit is a volunteer organization and the camp will stay open if we can afford the expense of maintaining the camp (we have to pay for trash pick-up, lavatory supplies, etc.). *Donations are what will keep the camp open and run as it always been run* – otherwise it could become a very expensive outing with all the reservations gone on January 1. So if you like the camp, help keep it the way it is!

**Donations can be sent to :** BCHC San Joaquin Sierra Unit  
P.O. Box 25693, Fresno, California 93729-5693  
Mark Donations for Big Meadow Horse Camp

#### **LOCATION**

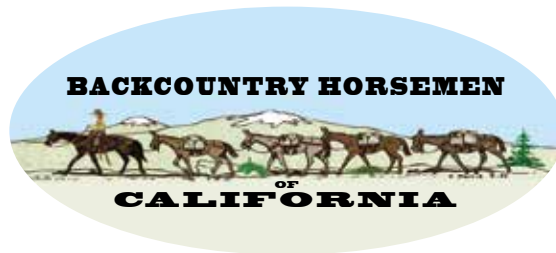
The camp is in Sequoia National Forest on the edge of Sequoia-Kings Canyon National Park (you have to enter the park to get here). From Fresno, CA, take highway 180 eastward to The Generals Highway (highway 198) and turn right onto 198; go about 7 miles to forest road 14S11 and turn left. There is a Big Meadows sign there; road 14S11 is paved; the camp is about 4 miles up the road (camp co-ordinates are 36°43'01.76N 118°50'57.71W).

There is no drinking water at the camp – bring your own. Early season may have some stock water available, but you should plan on the need to have water for your stock.

There is a good, maintained pit toilet at the site.

Fire rings are at the campsites; weather, drought, and USFS control whether fires are allowed or not.

*Will be open in 2018 starting May 25*



## *San Joaquin Sierra Unit*

Board Meeting March 7, 2018  
Elks Lodge, Clovis, Ca.

Call to order: 6:30

Roll Taken: President: William Duane Peverill, Vice President: Ted Fischer, Secretary: Carol Kaminski,  
Treasurer: Gary Van Sickle, Directors: Jim Knabke, Pete Parkin, Pat Peverill, Steve Naylon, Debbie McFarren, Jim Laber, Joe Kaminski-Past President, Fredi Chrisman

Guest: Wanda Caradonna, Debbie McDougal, Alan Fry

Absent: Sue VS

**Minutes review and approved:** 1st Pat Peverill, 2nd Debbie McFarren **Correspondence:**

**Committee reports**

**Education:** banner to be discussed later. Education award- send recommendations to state. Next year remember for Feb. 1. Leadership training-positive feedback. Needs quieter location.

**Membership:** 0 new member. 4 expired members.

**Newsletter:** Mar. 20 due date. Jim Laber- desert ride.

**Public lands.** On hold for now. High Sierra BCHC working on Sequoia Park.

**Sunshine:** Greg Caradonna-broken ankle.

**Shaver Lake:** Wanda-camp not used much past two years. Would like to open for other (Freepackers, High Sierra, SJSU) BCHC units to use. Camp needs work this year. Past 2 years camp used by fire crews and meadow was too wet. Road work needed. Work party to be scheduled. Wanda to write guidelines for camp use.

**RAC:** Ted requests RAC to be removed from agenda.

Debbie McD.-Trail stewardship grants available. Looking for interest from club. Willing to write grant with Ted, Alan and Debbie. Would be working to support crews with hauling supplies. Can work for both forests. Grants to cover transportation and food. Debbie will present at general meeting.

**OLD BUSINESS.** 1.Fresno State pack team- Pete motion for \$500 for intercollegiate pack team. Fredi 2nd. passed.

2. Poker Ride- Hensley Lake Mar 17 documents and permits submitted. Ride to start at 10:00. Joe and Carol to cook. Need more volunteers. 10 confirmed, 6 in mail. Need donations. Gary donated bull riding tickets. Club donated Clovis Rodeo tickets. Membership ride- mostly non-members have signed up.

3. Dave Stamey 2018-thank you from Dave Stamey. 2019 concert set for Sat. Jan. 12. Add maybe 20-30. Ted to proceed with Elks and Dave Stamey.

4. Rendezvous-Apr.13-15. Raffle tickets available. Donation increase to \$3 per member. Motion from Ted-\$250 from unit. Pat 2nd. Passed.

5. Big Meadows- Meeting with Kyle in the next few weeks. Donation boxed @\$100-\$200. Motion by Joe.

Pat 2nd. Passed. Jim K. to set host schedule. Work Party- May 22. Joe motion for Jim Laber to make donation envelopes. Ted 2nd. Passed.

6. Shoot your Heart out- Critique- fun, fantastic feedback. Thanks to John and Jan for all their work.

7. Desert Ride- Good time, no injuries. Schedule again for 2019.

8. John Cunningham and grant people to speak at general mtg.

**NEW BUSINESS:** 1. Shaver Lake

2. Intern sponsor- need \$ donation. \$500 from club motion by Joe. Debbie 2nd. Passed.

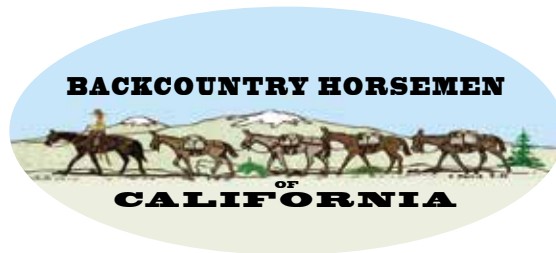
3. President award-Carol,Joe and Pete to bring back suggestions to board.

4. Amateur Radios- set-up frequencies for Big Meadows. We own two. Ted to get Gorge frequencies. Ted motion for 3 radios. Jim L 2nd. Passed.

5. Bear proof container loan-Sara from Wounded Warriors sponsor 28 day pack trip. In past we don't loan club equipment to non-members. Jim L. motion to loan if she becomes member. Pete 2nd. Passed.

**Calendar:** Apr. 21-22 Chainsaw state class. May 12-13 Crosscut state class. Montana de Oro- 15 spots available

**Adjourn:** 8:00 Fredi 1st, Debbie 2nd



## *San Joaquin Sierra Unit*

Board Meeting April 4, 2018

Call to order: 6:30

Roll Taken: President: William Duane Peverill, Vice President: Ted Fischer, Secretary: Carol Kaminski,

Treasurer: Gary Van Sickle

Directors: Jim Knabke, Pete Parkin, Pat Peverill, Steve Naylor, Debbie McFarren, Jim Laber, Sue Van Sickle, Joe Kaminski-

Past President, Fredi Chrisman, Advisor: Rick Perrin

**Minutes review and approved:** 1st Rick Perrin, 2nd Jim Laber

### **Committee reports**

**Education:** Ted- corrected dates on crosscut and chainsaw training(May12)

**Membership:** 0 new member.

**Newsletter:** Ma. 20 due date. Looking for new editor. Possibly Jim Laber with Joe as support.

**Public lands.** Meeting with Dinky Coll. next week. Discussion on possible cell tower. Meeting with Kyle tomorrow for Big Meadows. Working with EPA for less control for burn management. EPA trying to close Pismo Dunes because of pollution concerns. This will affect us in the future.

**Sunshine:** Letter sent out for Big Meadow donation.

**Shaver Lake:** No info from Wanda

**OLD BUSINESS.** 1. Waiting for Wanda for Shaver up-date.

2. FSU pack team. No interest. Doesn't look like it will happen.

3. Dave Stamey-Jan. 12,2019.(unofficial). Maybe add more seats.

4. Rendezvous-Apr.13-15. Raffle tickets available. Need beer and wine donations from clubs. Pat and JC to shop for club at rendezvous. Debbie is on for table decorations.

5. President's award-to be continued. Call or e-mail me.

6. Big Meadows- meeting tomorrow 4-5-18. May post notices at Rendozvous. Blast to go out, notifying BCHC.

7. Guest speaker- John Cunningham-good feed -back. Debbie McDougal- good feedback.

8. Radios- in the mail. @\$40 per unit.

9. Bear containers-No update. Info passed on with membership app.

10. Parade desensitizing: Canceled. Parade now requires 3rd party insurance.

**NEW BUSINESS:** 1. Diana Sorenson Ride- @ \$3,000 in account. Pete wants money maybe used for scholarship or?

Joe-maybe push for membership ride with money. Joe to finalize date.

2. Jim Laber-Decal for BCHC-SJSU. Jim willing to donate at material cost. Reflective 2X the cost. Jim to get back to us.

**Calendar:** Review- update. PS-\$200 in budget for Elks in past. Pay now. Duane motion, Ted 2nd. Passed.

No speaker yet for May 16 general meeting.

**Adjorn:** 8:00 Ted 1st, Pat 2nd

[www.bchcsjsu.org](http://www.bchcsjsu.org)

Make sure you check out our website for updates on the Home page, Calendar page, and Newsletters. We also have a Photos page of our latest activities.

If you have any photos send them to Duane at [wpeverill@sebastioncorp.net](mailto:wpeverill@sebastioncorp.net).

[www.bchcsjsu.org](http://www.bchcsjsu.org)

## Advertising Rates

### Classified Ads

\$.10/word with a 20 word minimum (\$2.00),  
\$.50 a line after that.

### Display Ad Rate per issue

Business Card Size, \$8.00,	1/2 page, \$35.00,
1/4 page, \$20.00,	Full Page, \$50.00

Prices are subject to change without notice. All prices are for one month, due the 10th of the month. Editor reserves the right to refuse inappropriate ads.

**All paid Ads include an E-mail Blast to all members with current emails**

## Attention

Your SJS Unit Board of Directors would like to invite any of our members to attend the monthly Board meetings or General meetings. It is important all directors have the same opportunity to hear the information, concerns or suggestions you wish to share. We are volunteers doing our best to keep our Unit informed and working smoothly. Refer to the newsletter for the information regarding times and location of upcoming meetings.

Respectfully,  
Joe Kaminski  
Past President



Your Full Service Realtor  
**Jessica Gabrielson**  
Realtor, GRI, SRES, SFR, ASP  
DRE#01338726

559.905.7724  
Office 559.321.6040  
Fax 559.321.6044  
[jgabrielson@guarantee.com](mailto:jgabrielson@guarantee.com)

180 W. Bullard Ave.  
Clovis, CA 93612



**"I don't horse around when it comes to selling your porperty"**

## "Travel Advantage"

Dear BCHC Members

Check out the latest edition of "Travel Advantage", @ [www.ytbtravel.com/bchc](http://www.ytbtravel.com/bchc) a travel newsletter full of terrific deals from YTB, our BCHC travel partner. The newsletter is chock full of great ideas for anyone's next getaway! You can download an icon to your computer desktop for instant connection to the BCHC Getaway website.

Please forward "Travel Advantage" newsletter to your friends and family and other BCHC supporters. The more we get the word out, the more people will use the BCHC Getaway travel site to take advantage of great rates on hotels, flights, rental cars and other travel-related items, the more BCHC will earn for our Treasury!!

Please do not hesitate to contact me if you have any questions about the travel site, how it works or what BCHC earns by participating in this great opportunity. Thank you for supporting and promoting BCHC Getaway!!

C.J. Hargreaves  
BCHC Editor/Travel Site Coordinator  
[cjohargreaves@verizon.net](mailto:cjohargreaves@verizon.net)

**Backcountry Horsemen  
of California**



**MAIL TO: BCHC  
MEMBERSHIP  
1280 State Rt. 208  
Yerington NV 89447**

**MEMBERSHIP  
APPLICATION**

**PARENT UNIT AFFILIATION: (Select and CHECK a Unit as your Affiliation)**

**New**    **Renewal**  
 **Change**

*(indicate change)*

<input type="checkbox"/> Antelope Valley	<input type="checkbox"/> Kern Sierra	<input type="checkbox"/> North Bay	<input type="checkbox"/> Santa Ana River
<input type="checkbox"/> Eastern Sierra	<input type="checkbox"/> Lake-Mendo	<input type="checkbox"/> Pacific Crest	<input type="checkbox"/> Sequoia
<input type="checkbox"/> High Country	<input type="checkbox"/> Los Padres	<input type="checkbox"/> Redshank Riders	<input type="checkbox"/> Shasta Trinity
<input type="checkbox"/> High Sierra	<input type="checkbox"/> Mid Valley	<input type="checkbox"/> Redwood	<input type="checkbox"/> Sierra Freepackers
<input type="checkbox"/> Kern River Valley	<input type="checkbox"/> Mother Lode	<input type="checkbox"/> San Diego	<input type="checkbox"/> Sutter Buttes
		<input type="checkbox"/> San Joaquin Sierra	<input type="checkbox"/> Top of the State

DCTR (your Membership)

MEMBER'S NAME – No Business Names, Print Clearly   SPOUSE/Co-MEMBER'S NAME – MUST SHARE SAME ADDRESS

Street Address/PO Box

City \_\_\_\_\_ State \_\_\_\_\_ Zip Code (full 9 digits if known) \_\_\_\_\_ Area Code \_\_\_\_\_ Phone number \_\_\_\_\_

Email Address: \_\_\_\_\_ (please print legibly)

Donation to BCHC Education Fund (tax deductible) \$ \_\_\_\_\_

Total Enclosed: \$ \_\_\_\_\_ Check No. \_\_\_\_\_

**Parent Unit Membership Types (Check one)**

Individual \$50    Family \$60    2 Year Individual \$90    2 Year Family \$110    3 Year Individual \$125    3 Year Family \$150

Young Adult (18-25 years old) \$15 – Benefactor \$100 – Patron \$250 – Mt. Whitney \$500

Associate Memberships: An Additional \$15 PER UNIT is added to your Parent Unit Dues

**Associate Memberships Unit Affiliations MAY NOT BE FOR THE SAME UNIT AS YOUR PARENT UNIT**

Associate Membership for: \_\_\_\_\_ \$15.00/Unit  
Unit Name (from above list)

Associate Membership for: \_\_\_\_\_ \$15.00/Unit  
Unit Name (from above list)

\_\_\_\_\_  
Add additional choices here

**Please clip form along dashed line and keep the below portion for your records**

**Parent BCHC Membership Types**

Individual, Family, (Shared\*), Benefactor, Patron, and Mt. Whitney

A Parent Membership is affiliated with a single Local Unit. BCHC members may NOT hold more than ONE active Parent Membership.

\*A SHARED Membership is for two adults with differing last names who share a common address.

**ASSOCIATE MEMBERSHIPS**

These special Memberships are only available to persons already holding Parent BCHC Membership. No one may sign up for an Associate Membership without 1) having registered one of the Parent Membership types, and 2) having selected Parent Unit affiliation.

**Complete information regarding BCHC Membership is available on the MEMBERSHIP TAB at [bchcalifornia.org](http://bchcalifornia.org) or call (775) 463-3634**

**KEEP FOR YOUR RECORDS**

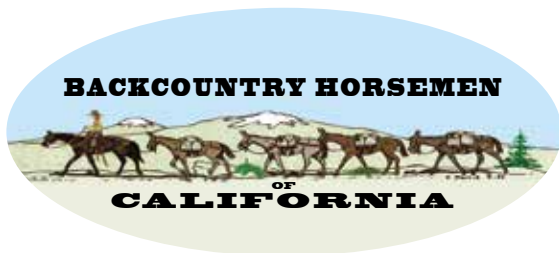
I submitted an Application Form for a new -

<input type="checkbox"/> Individual Membership	<b>\$ 50.00</b>
<input type="checkbox"/> Family (Shared) Membership	<b>\$ 60.00</b>
<input type="checkbox"/> Young Adult (18-25 years old)	<b>\$ 15.00</b>
<input type="checkbox"/> 2 Year Individual	<b>\$ 90.00</b>
<input type="checkbox"/> 2 Year Family	<b>\$110.00</b>
<input type="checkbox"/> 3 Year Individual	<b>\$125.00</b>
<input type="checkbox"/> 3 Year Family	<b>\$150.00</b>
<input type="checkbox"/> Benefactor Membership	<b>\$100.00</b>
<input type="checkbox"/> Patron Membership	<b>\$250.00</b>
<input type="checkbox"/> Mt. Whitney Membership	<b>\$500.00</b>

On that form, I also requested:  
 \_\_\_\_\_ Associate Memberships                      \$ \_\_\_\_\_  
 My Total Remittance:    \$ \_\_\_\_\_  
 My Check Number: \_\_\_\_\_  
 Date Mailed: \_\_\_\_\_

**Verification of BCHC membership**

is available via (1) BCHC unit president's reports (2) BCHC membership chair reports (3) a self-addressed stamped envelope submitted with this form or (4) a valid email address



*San Joaquin Sierra Unit*

P.O. Box 25693  
Fresno, CA 93729-5693

## **Objectives & Purpose of the Backcountry Horseman of California**

*From the BCHC Bylaws*

- To improve and promote the use, care and development of California backcountry trails, campsites, streams and meadows; to advocate good trail manners.
- To promote the conservation and utilization of our backcountry resources in concert with livestock transportation.
- To keep the backcountry trails and forage areas open to horseman on all public lands.
- To keep current information before the Corporation membership and its local Units regarding new legislation or management plans related to government regulations of the backcountry.
- To support or oppose new proposals, plans and restrictions as related to the interest of horsemen and those persons interested in recreational stock use and enjoying the backcountry.
- To promote the interest of people who, due to health or physical factors, need transportation other than by foot on backcountry trails.
- To promote public awareness and interest in the historical aspect of horsemen and stock in the back-country and to help educate backcountry users on the ways to use the trail and foraged in a manner that conserves the backcountry resources.
- To assist in keeping the public informed of the vital need for a clean backcountry.
- To promote a working relationship with and keep the work and interests of the Corporation before our local, state and federal officials.
- To assist in the formation and continuation of local Units to carry out these purposes.